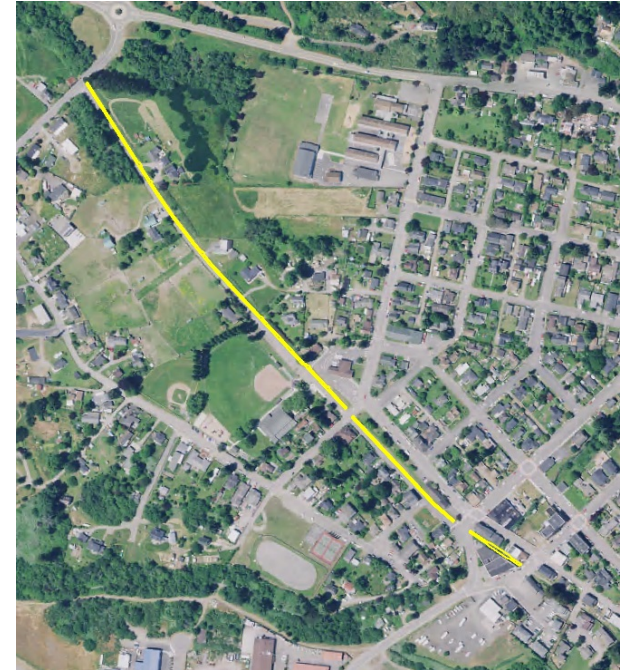


# City of Blue Lake's Annie & Mary Trail Project



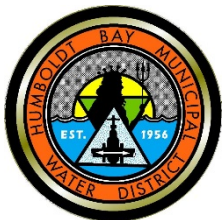
North Coast  
Railroad Authority

January 9, 2019

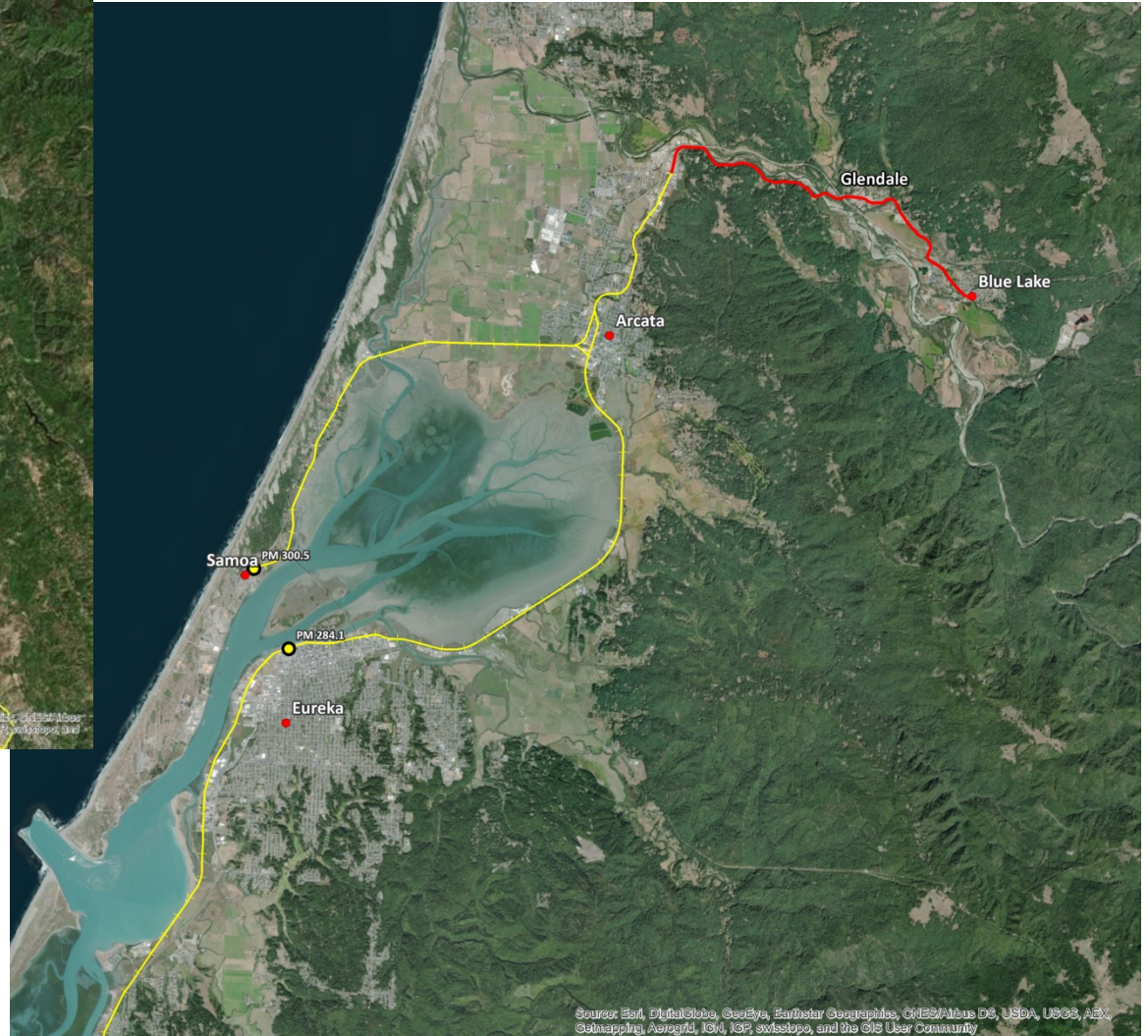
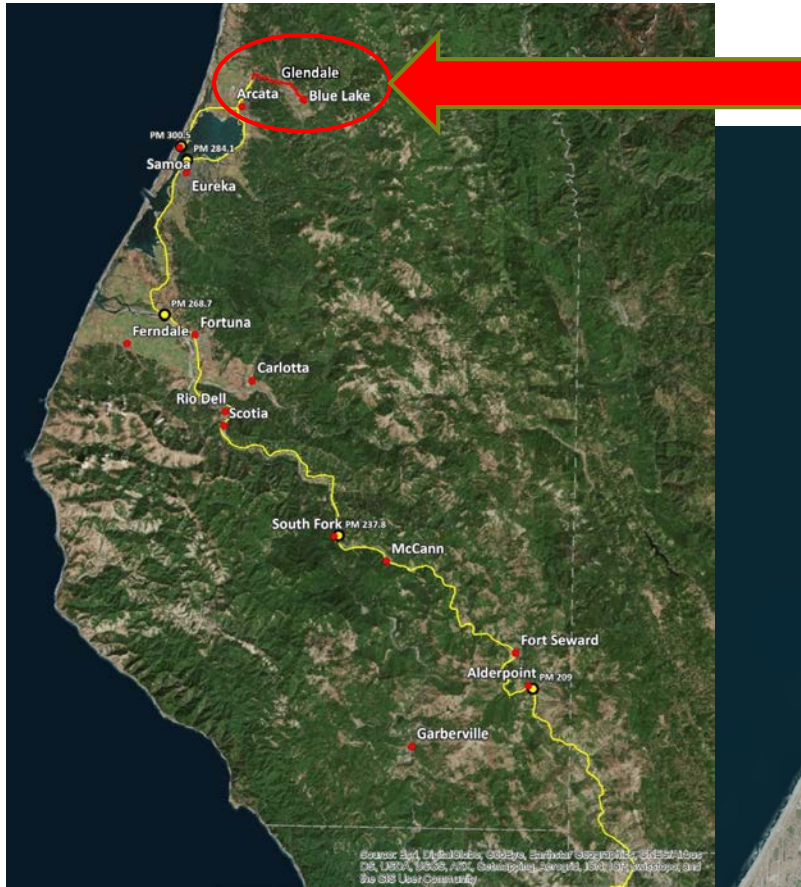


*Hank Seemann, Deputy Director*  
Humboldt County Public Works Department

*Mike Foget, Principal Civil Engineering*  
SHN Engineers & Geologists  
Blue Lake City Engineer



# Arcata & Mad River Branch Line

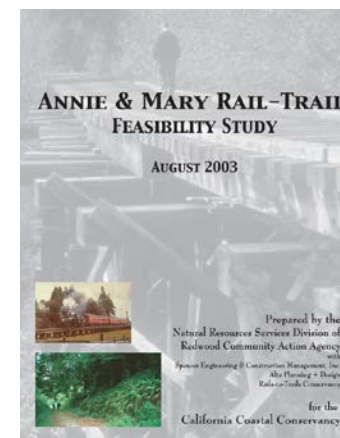


# Annie & Mary Trail Timeline

1881 Arcata & Mad River Railroad Co. incorporated  
1884 First train operated  
1992 A&MRR Co. acquired by NCRA  
1995 Last train operated  
1997 Rails and ties removed for salvage



1997 Friends of the Annie & Mary Trail formed  
2003 Annie & Mary Rail-Trail Feasibility Study  
2008 NCRA resolution supporting multi-modal use  
2008-present Incorporation in regional transportation plans  
2010 Environmental Assessment  
2011-2012 Evaluation of Mad River bridge at Glendale  
2012-2015 Evaluation of railroad deeds



2015 Initiation of scoping for phased projects near Blue Lake  
2016 Blue Lake applied for ATP funding for Phase 1 project -- awarded  
2016-2017 County evaluated Blue Lake-to-Glendale trail segment (Phase 2)  
2018 Caltrans applied for ATP funding for Phase 2 project -- not awarded  
2018-2020 Arcata to evaluate multi-modal options near west end of A&M line

# Arcata & Mad River Branch Line



# Blue Lake's Phase 1 Project





© 2018 Google  
© 2019 Google

Google Earth



© 2018 Google  
© 2019 Google

Google Earth



© 2018 Google  
© 2019 Google

Google Earth



© 2018 Google  
© 2019 Google

Google Earth



© 2014 Google

© 2018 Google

© 2018 Google

© 2018 Google

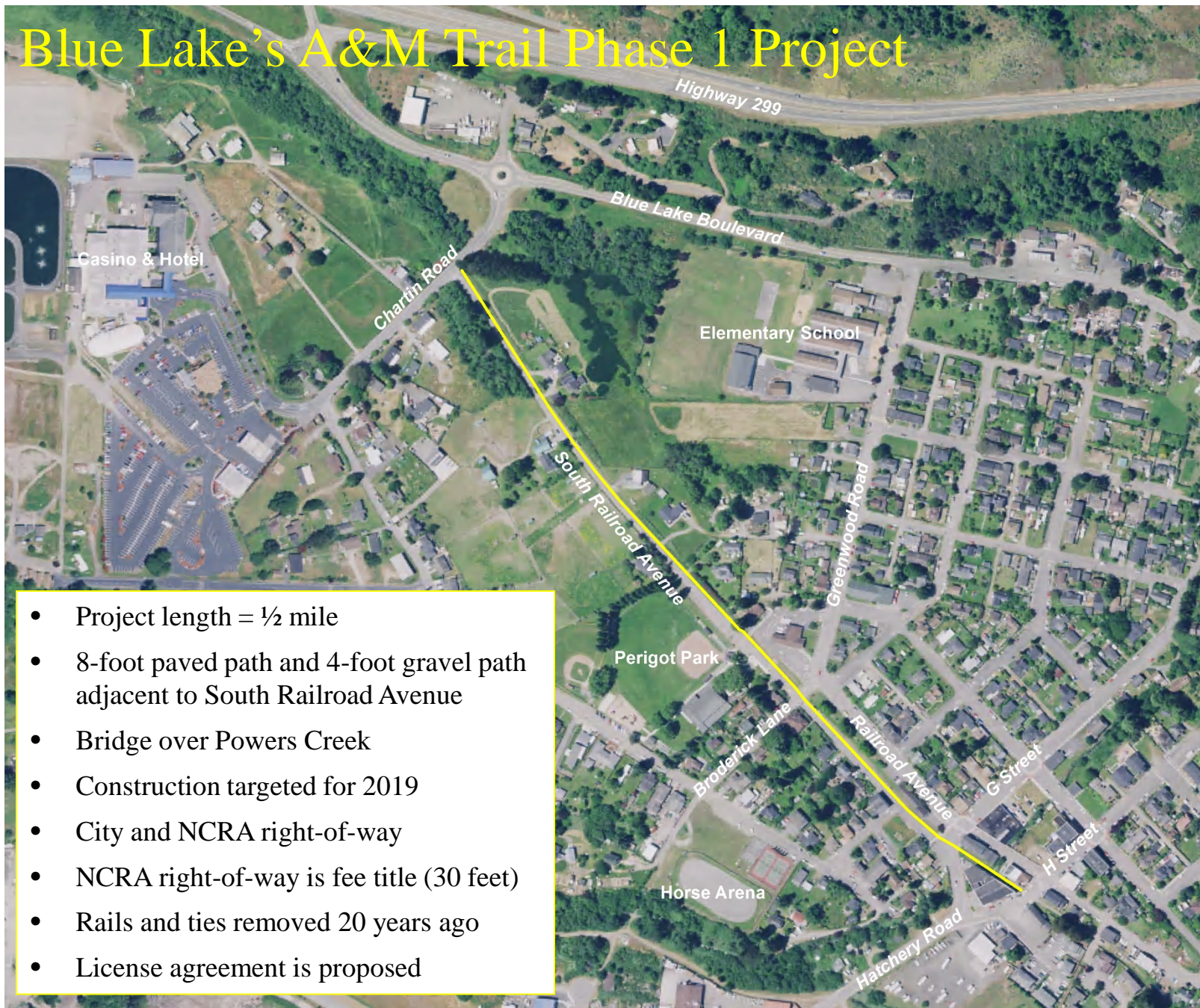
© 2019 Google

Google Earth

# Blue Lake's A&M Trail Phase 1 Project



# Blue Lake's A&M Trail Phase 1 Project



- Project length = ½ mile
- 8-foot paved path and 4-foot gravel path adjacent to South Railroad Avenue
- Bridge over Powers Creek
- Construction targeted for 2019
- City and NCRA right-of-way
- NCRA right-of-way is fee title (30 feet)
- Rails and ties removed 20 years ago
- License agreement is proposed

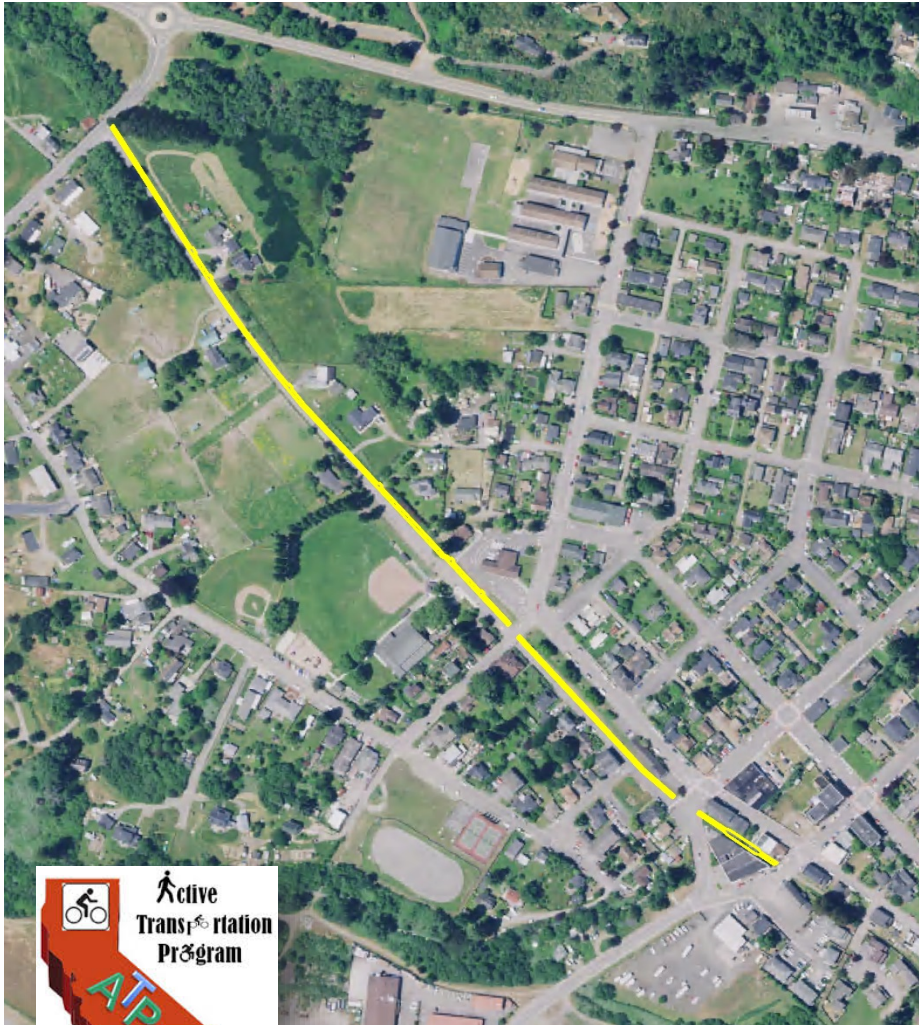


NCRA Right-of-Way



NCRA Right-of-Way

# Blue Lake's A&M Trail Phase 1 Project



North Coast Railroad Authority  
419 Talmage Road, Suite M  
Ukiah, CA 95482  
707-463-3280

May 11, 2016

CALTRANS  
Division of Local Assistance, MS 1  
1120 N Street, MS 1  
Attn: Office of Active Transportation and Special Programs  
Sacramento, CA 94274-0001

Re: Support for the City of Blue Lake's Annie & Mary Trail, Phase 1 Project

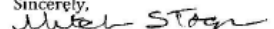
Dear Application Review Committee,

The North Coast Railroad Authority (NCRA) is writing to support the City of Blue Lake's funding application to the state Active Transportation Program (ATP) for the Annie & Mary Trail, Phase 1 Project. The City of Blue Lake seeks ATP funds to design and construct the first portion of the Annie & Mary Trail, located along Railroad Avenue within city limits. Portions of the City's project may lie within the Arcata & Mad River Railroad (A&M) right-of-way, which is owned by NCRA. Advancing the Annie & Mary Trail, with the ultimate goal of connecting the cities of Arcata and Blue Lake, has been a regional transportation priority for nearly two decades.

The A&M railroad line has a rich history going back to the 1850s. For much of the 19<sup>th</sup> and 20<sup>th</sup> centuries, this line served as a branch line to the Northwestern Pacific main line and provided a critical transportation and economic link in Humboldt County. Train operations ceased in the 1990s due to safety concerns regarding line conditions. In 2008, the NCRA passed Resolution No. 2008-11 to express its willingness to cooperate with local entities to effectuate multi-modal transportation use of the A&M line. Resolution No. 2008-11 noted that the A&M roadbed is outside the prospective contract limits of NCRA's contract operator (NWP Co.), and it is unlikely and infeasible that the NCRA will operate trains on the A&M roadbed in the near future.

NCRA continues to be willing to cooperate with the City of Blue Lake and others to realize multi-modal transportation use of the A&M line. This approval is conceptual for funding application purposes only. Final design review by NCRA will be required prior to construction for all work to be performed within NCRA's right-of-way. In addition, an entity such as the City of Blue Lake will be required to enter into an agreement to manage and maintain the constructed trail within the right-of-way.

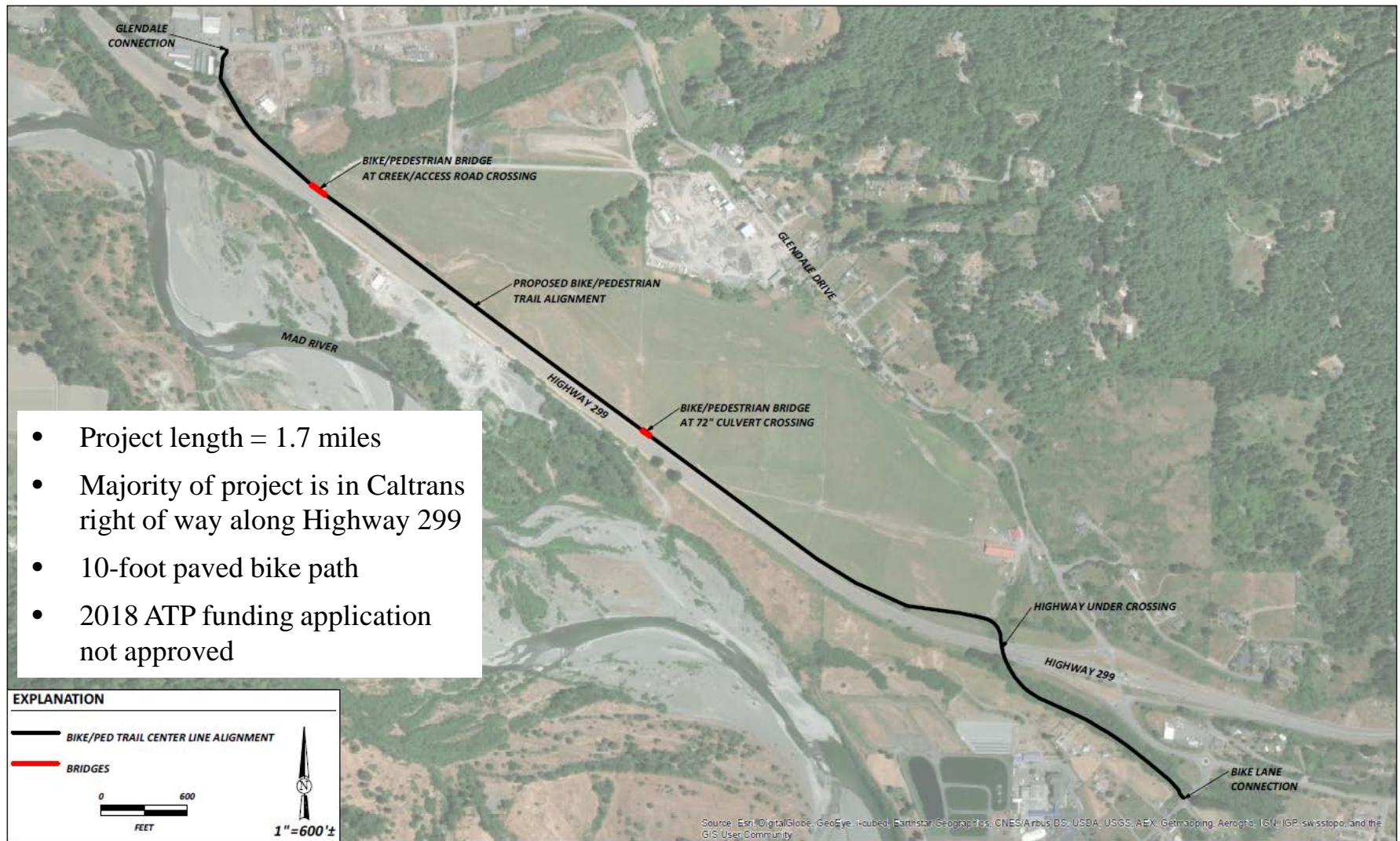
We are pleased to support Blue Lake's Annie and Mary Trail, Phase 1 Project and encourage financial assistance for this worthwhile project.

Sincerely,  
  
Mitch Stogner, Executive Director

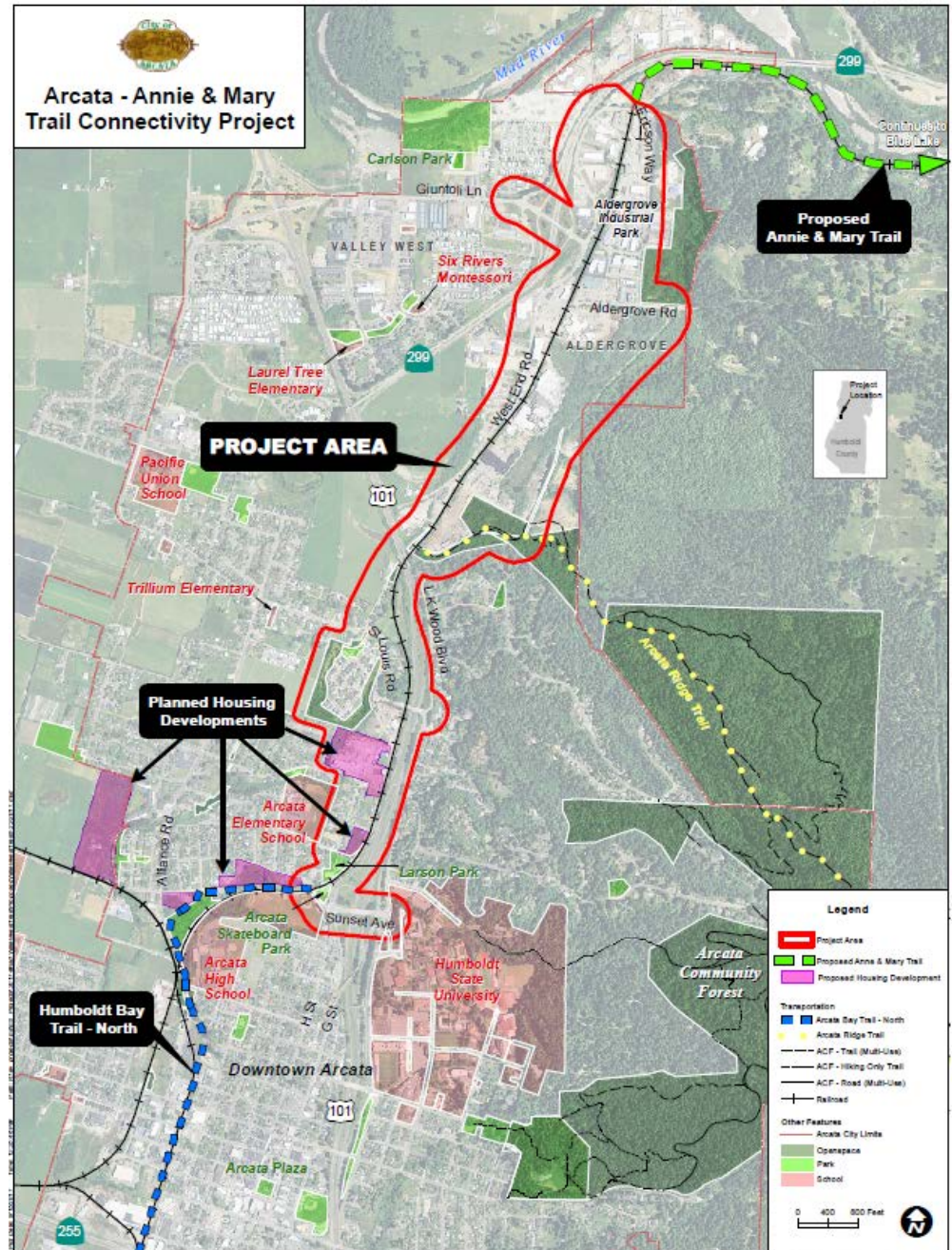


# OTHER A&M TRAIL PROJECTS

# A&M Trail Phase 2 Project: Blue Lake to Glendale



# City of Arcata's Study for Multi-Modal Projects (2018-2020)



# Conclusion

- The Annie & Mary Trail (A&M Trail) has been a vision and regional priority for over 20 years, and will be constructed in phases as a collaborative effort among several local agencies and community groups
- The City of Blue Lake has the first funded project to construct Phase 1 of the A&M Trail
- A draft License Agreement for Blue Lake's project was shared with NCRA staff last week
  - We assume the Rail-with-Trail policy does not apply
  - We assume railbanking is not needed
- Target is to receive License Agreement by April/May 2019
- Humboldt County and City of Blue Lake are ready to work closely with NCRA to complete this project