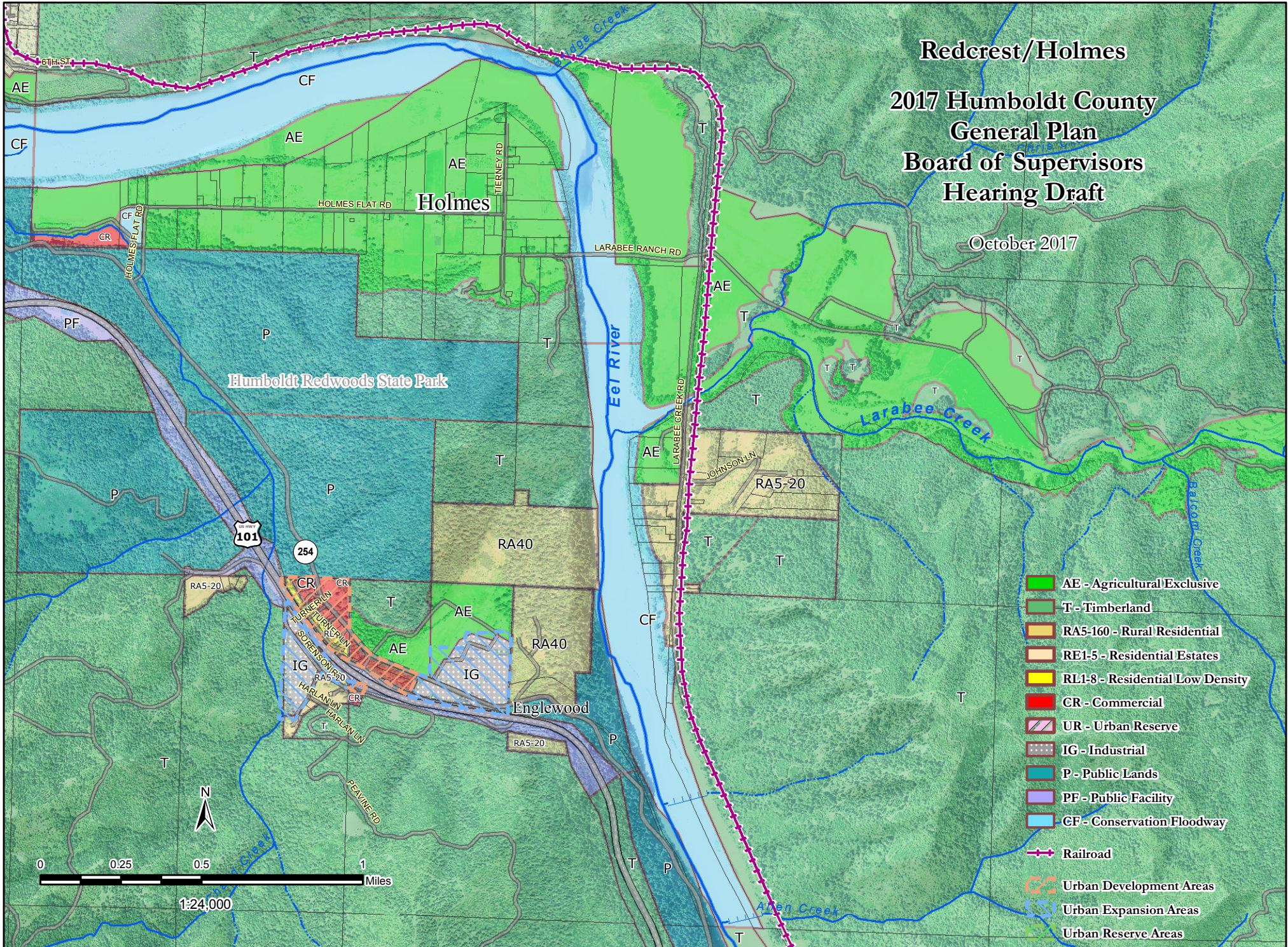


Redcrest/Holmes

2017 Humboldt County General Plan Board of Supervisors Hearing Draft

October 2017



- AE - Agricultural Exclusive
- T - Timberland
- RA5-160 - Rural Residential
- RE1-5 - Residential Estates
- RL1-8 - Residential Low Density
- CR - Commercial
- UR - Urban Reserve
- IG - Industrial
- P - Public Lands
- PF - Public Facility
- CF - Conservation Floodway
- Railroad
- Urban Development Areas
- Urban Expansion Areas
- Urban Reserve Areas

