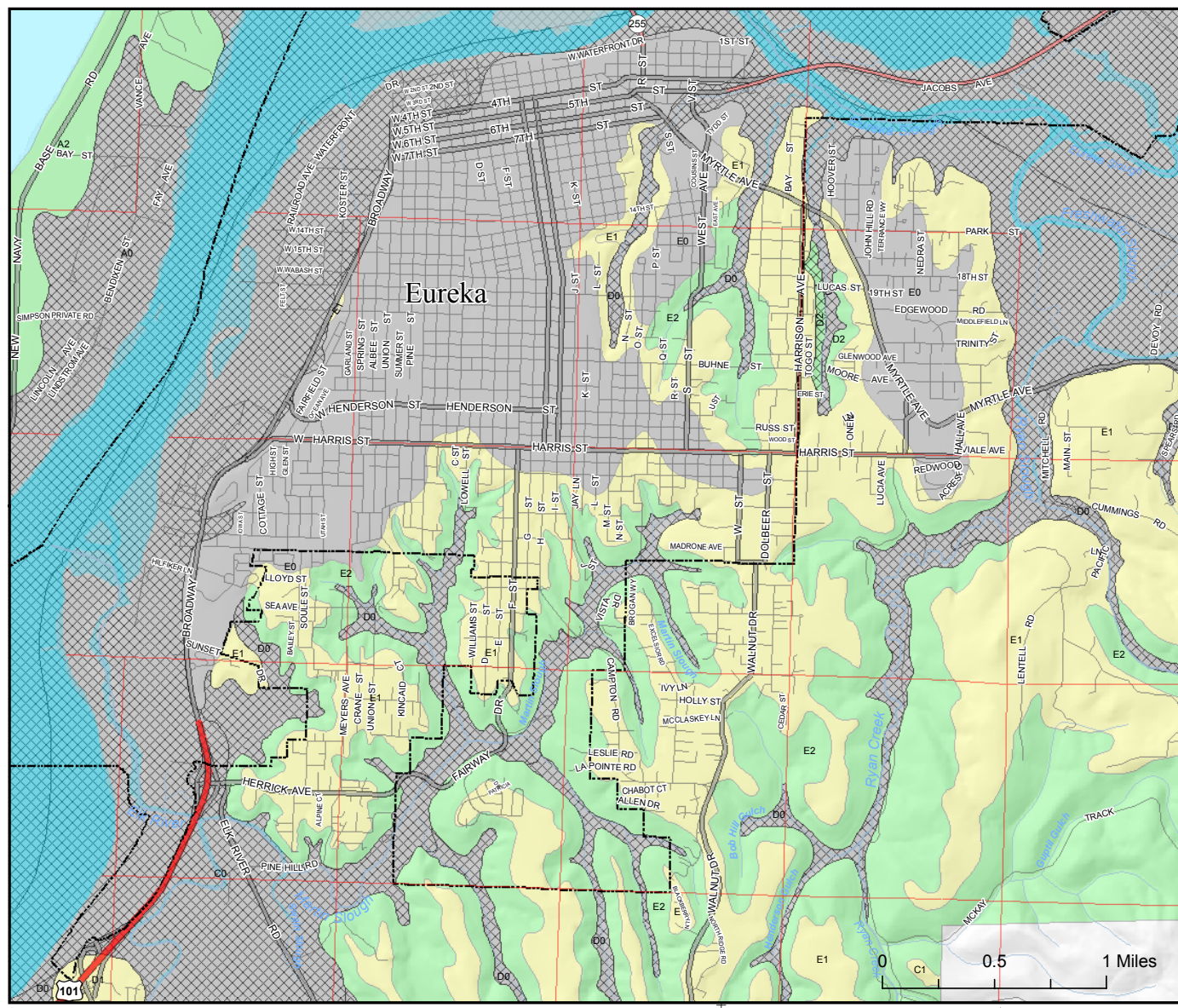
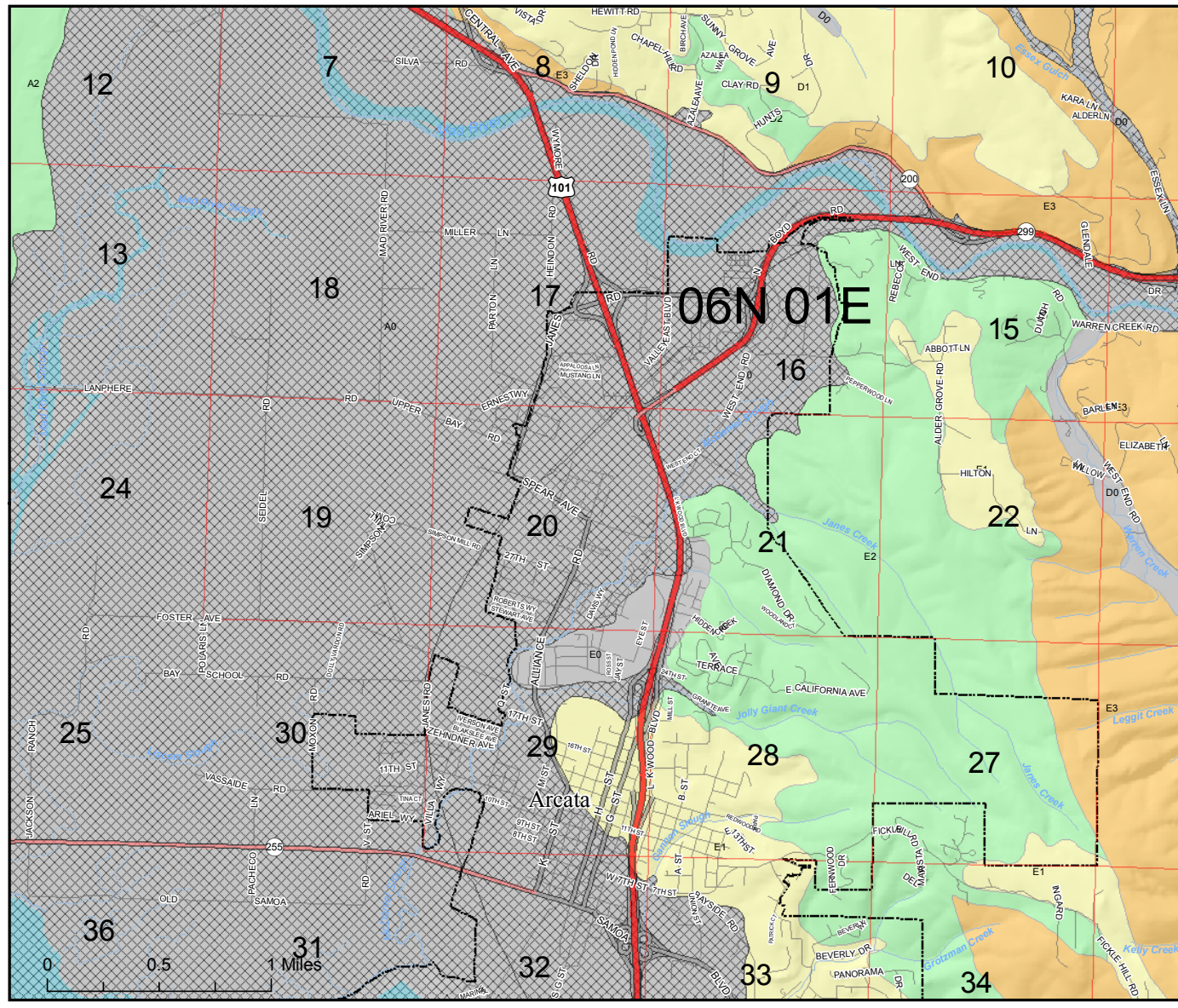


# Humboldt County Seismic Safety and Relative Slope Stability



## Legend

### Relative Slope Stability

- 3 High Instability
- 2 Moderate Instability
- 1 Low Instability
- 0 Relatively Stable

### Area of Potential Liquefaction

- Area of Potential Liquefaction

### EARTHQUAKE GROUND SHAKING

Boundary and Designation (letters) of zone based on response of earth materials at site.

### CHARACTERISTICS OF EARTHQUAKE SHAKING

- | ZONE | CHARACTERISTIC                                   | CHARACTERISTICS OF EARTHQUAKE SHAKING   |
|------|--|---|
| A    | Deep alluvium with recent deposits at surface    | Moderate alterations, but predominately of longer periods (ie. high energy content) with longer duration of shaking.                    |
| B    | Deep alluvium with older deposits at surface     | Moderate to lower accelerations, but predominately of longer periods (ie. higher energy content) with intermediate duration of shaking. |
| C    | Shallow alluvium with recent deposits at surface | High acceleration of short to intermediate periods (ie. moderate energy content) with intermediate duration of shaking.                 |
| D    | Shallow alluvium with older deposits at surface  | Moderately high accelerations of short to intermediate periods (ie. moderate energy content) with intermediate duration of shaking.     |
| E    | Bedrock  | Higher accelerations but of relatively short periods (ie. lower energy content) and shorter duration of shaking.                        |

### Detail Mapping Boundary

— Detail Mapping Boundary

### Public Land Survey

- Townships
- Section Lines

### Other Boundaries

- Cities
- Public Lands

### Highways and Roads

- Principal Arterials
- Minor Arterials
- Major Collectors
- Minor Collectors

### Hydrography

- Streams and Rivers

This map is designed for display purposes and should not be used for precise measurement or navigation.

ArcMap 9.1 Document: CDS0571c:\prj\base2\soils.mxd

HP DesignJet 500PS Plot File: H:\plots\base2\soils.pr5

Map compiled by Humboldt County Community Development Services, Nov. 2006. Contact: cdevis@co.humboldt.ca.us

