

Attachment G

Parcels Which are Zoned to Principally Permit Emergency Shelters

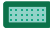


Attachment G of Appendix G will be removed as part of the housing program H-IM54 for the amendment of the Zoning Regulations to eliminate the “where specifically mapped” qualifying language for emergency shelters. See H-IM54 in Chapter 8 for more information.

McKinleyville

General Plan Housing Element

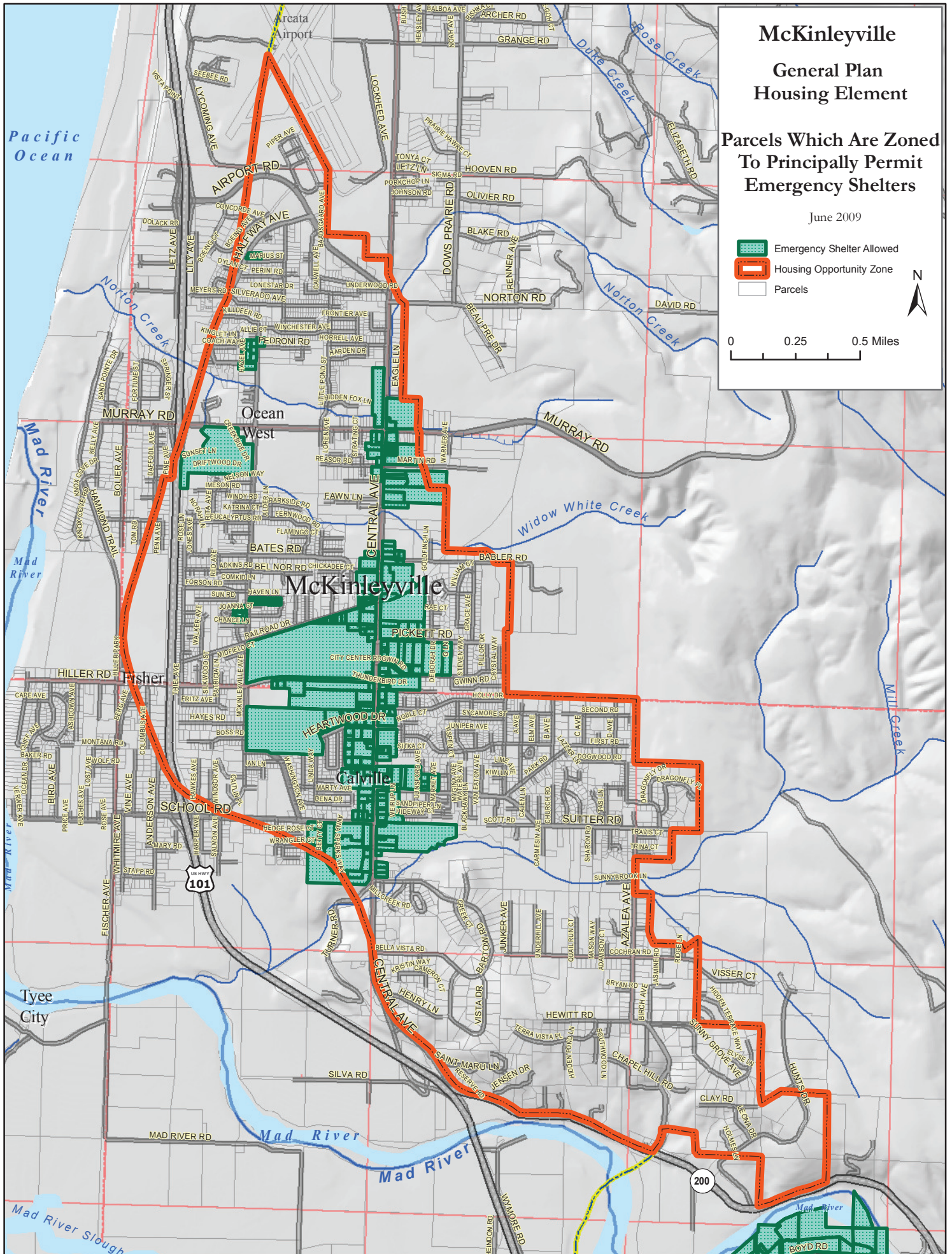
Parcels Which Are Zoned To Principally Permit Emergency Shelters

June 2009

-  Emergency Shelter Allowed
-  Housing Opportunity Zone
-  Parcels






0 0.25 0.5 Miles



Eureka South General Plan Housing Element

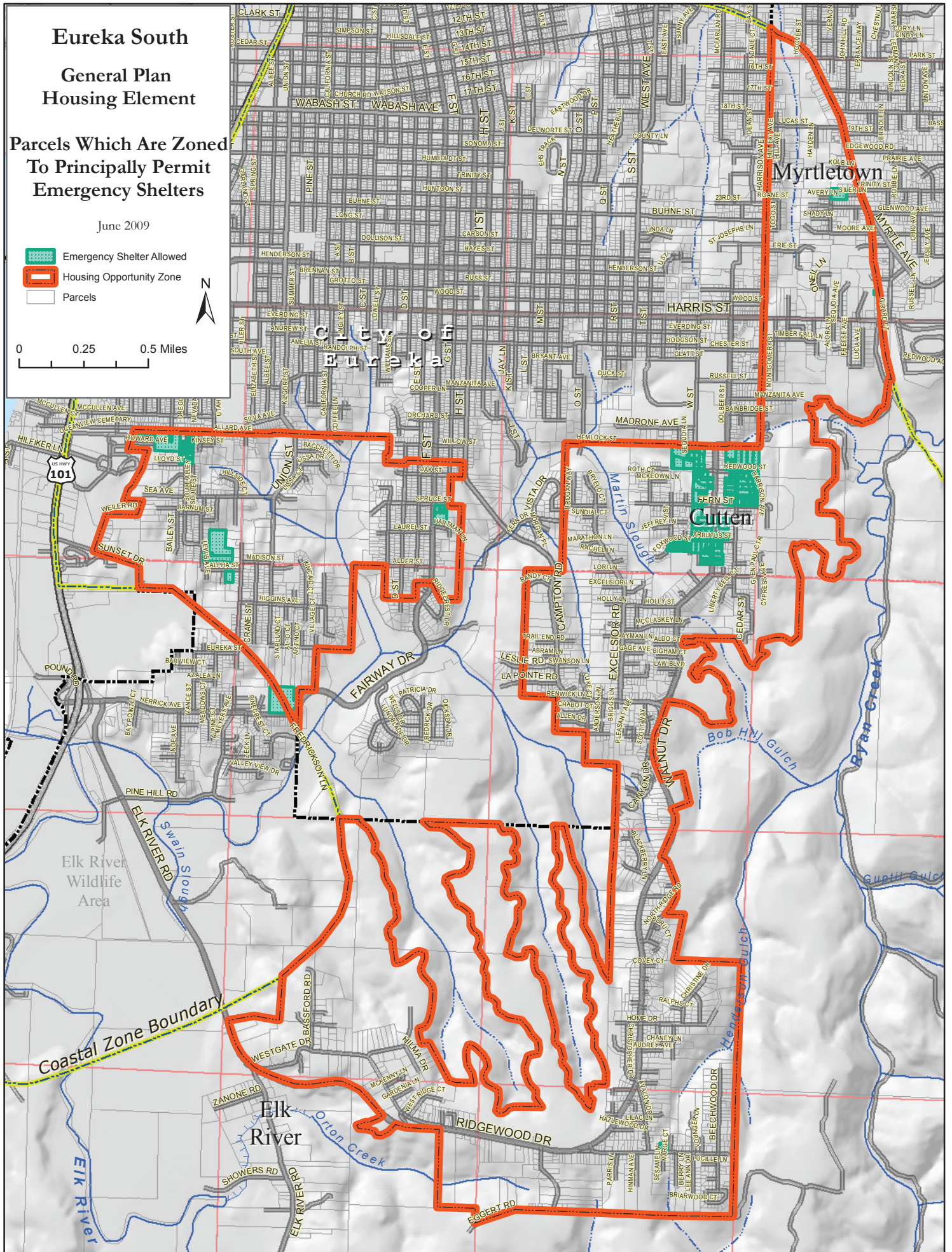
Parcels Which Are Zoned To Principally Permit Emergency Shelters

June 2009

-  Emergency Shelter Allowed
-  Housing Opportunity Zone
-  Parcels



0 0.25 0.5 Miles






Humboldt Hill

General Plan Housing Element

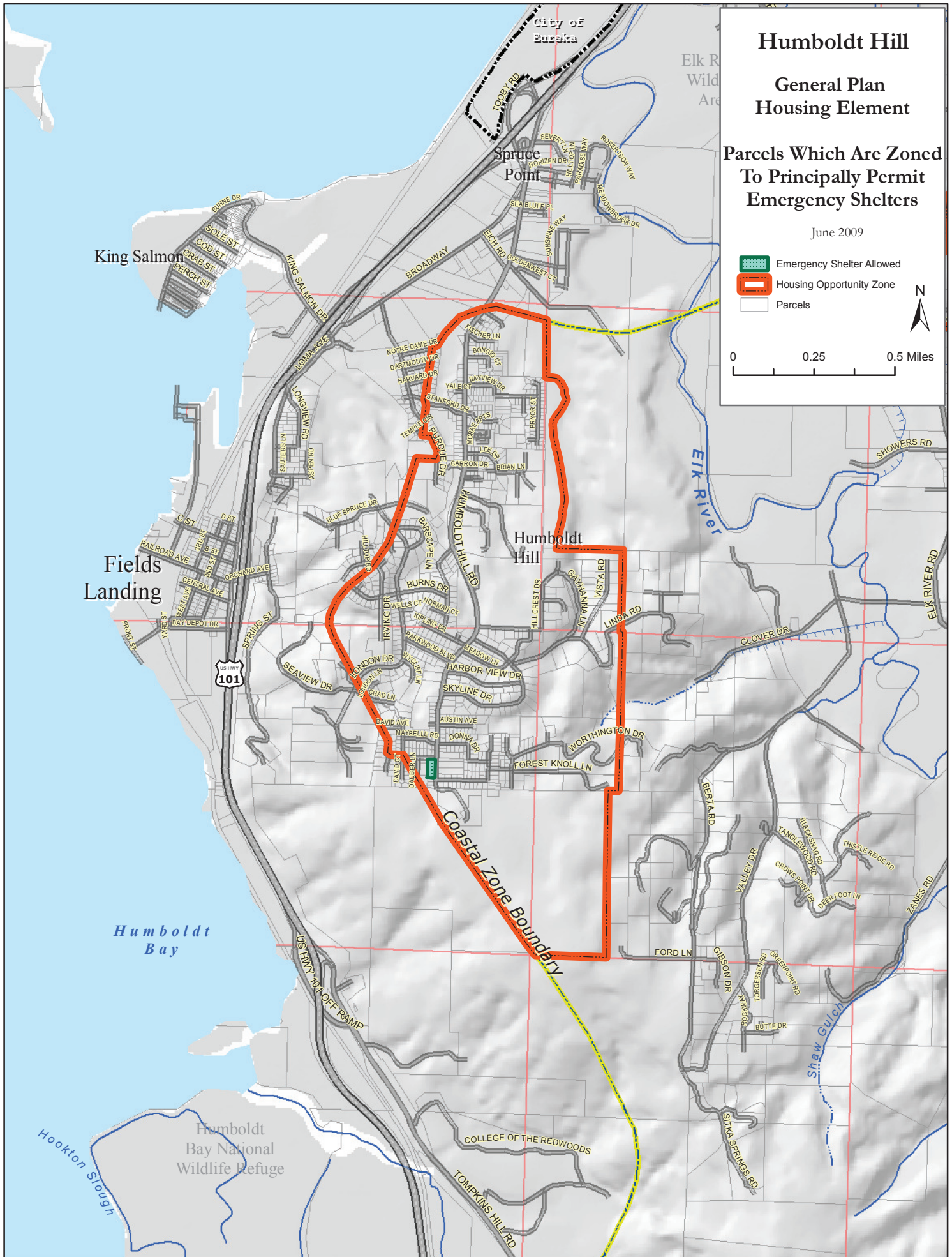
Parcels Which Are Zoned To Principally Permit Emergency Shelters

June 2009

-  Emergency Shelter Allowed
-  Housing Opportunity Zone
-  Parcels



0 0.25 0.5 Miles






Weott

General Plan Housing Element

Parcels Which Are Zoned To Principally Permit Emergency Shelters

June 2009

-  Emergency Shelter Allowed
-  Housing Opportunity Zone
-  Parcels



0 0.25 0.5 Miles

