

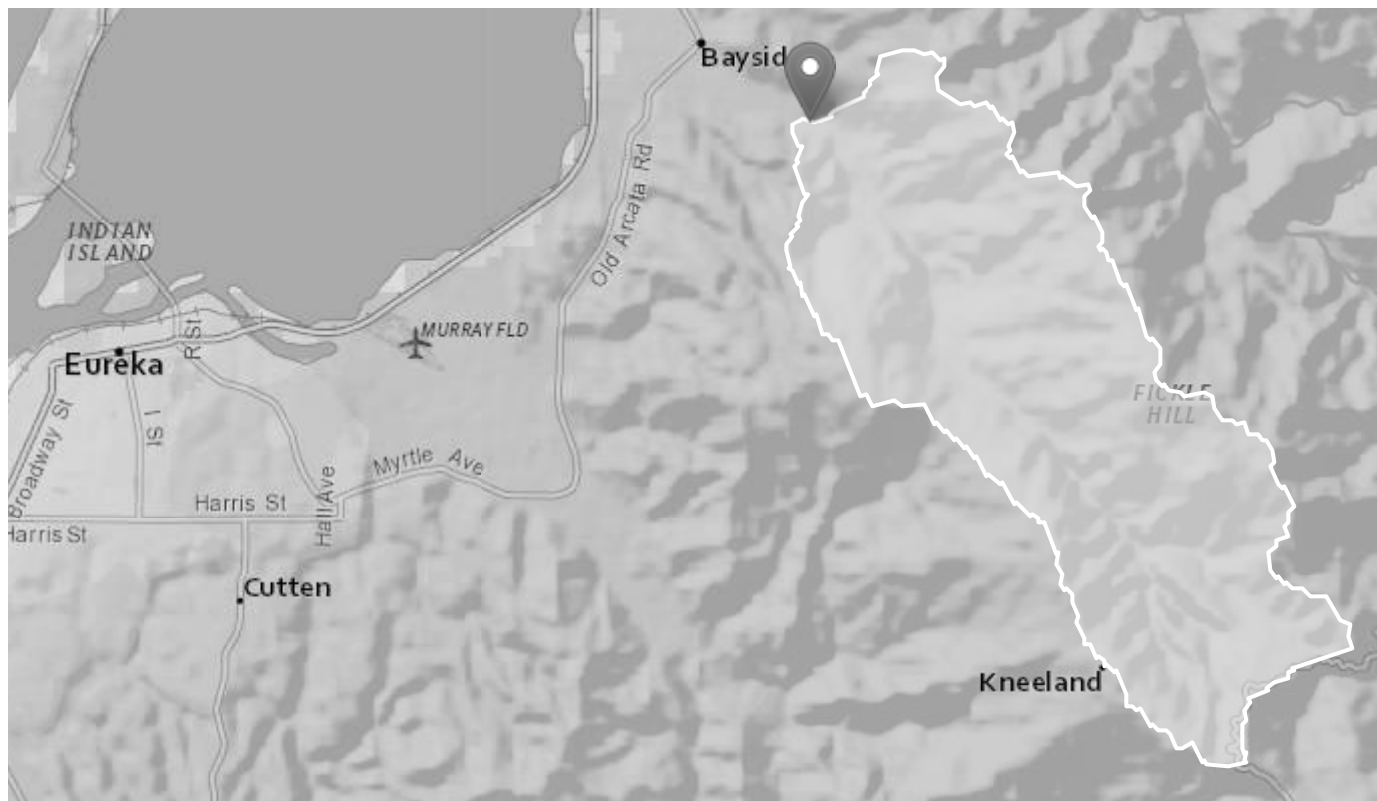
Lower Jacoby Creek at Brookwood Bridge StreamStats Report

Region ID: CA

Workspace ID: CA20220921214423629000

Clicked Point (Latitude, Longitude): 40.83196, -124.04521

Time: 2022-09-21 14:44:51 -0700



+ Collapse All

➤ Basin Characteristics

| Parameter Code | Parameter Description | Value | Unit |
|----------------|---|-------|--------------|
| DRNAREA | Area that drains to a point on a stream | 13.6 | square miles |
| PRECIP | Mean Annual Precipitation | 63.3 | inches |

➤ Peak-Flow Statistics

Peak-Flow Statistics Parameters [2012 5113 Region 1 North Coast]

| Parameter Code | Parameter Name | Value | Units | Min Limit | Max Limit |
|----------------|---------------------------|-------|--------------|-----------|-----------|
| DRNAREA | Drainage Area | 13.6 | square miles | 0.04 | 3200 |
| PRECIP | Mean Annual Precipitation | 63.3 | inches | 20 | 125 |

Peak-Flow Statistics Flow Report [2012 5113 Region 1 North Coast]

PII: Prediction Interval-Lower, Plu: Prediction Interval-Upper, ASEp: Average Standard Error of Prediction, SE: Standard Error (other -- see report)

| Statistic | Value | Unit | PII | Plu | ASEp |
|-----------------------|-------|--------------------|------|-------|------|
| 50-percent AEP flood | 1140 | ft ³ /s | 469 | 2770 | 58.6 |
| 20-percent AEP flood | 2020 | ft ³ /s | 969 | 4210 | 47.4 |
| 10-percent AEP flood | 2640 | ft ³ /s | 1310 | 5300 | 44.2 |
| 4-percent AEP flood | 3440 | ft ³ /s | 1770 | 6690 | 42.7 |
| 2-percent AEP flood | 4050 | ft ³ /s | 2080 | 7890 | 42.7 |
| 1-percent AEP flood | 4670 | ft ³ /s | 2340 | 9310 | 44.3 |
| 0.5-percent AEP flood | 5250 | ft ³ /s | 2630 | 10500 | 44.4 |
| 0.2-percent AEP flood | 6030 | ft ³ /s | 2950 | 12300 | 46 |

Peak-Flow Statistics Citations

Gotvald, A.J., Barth, N.A., Veilleux, A.G., and Parrett, Charles, 2012, Methods for determining magnitude and frequency of floods in California, based on data through water year 2006: U.S. Geological Survey Scientific Investigations Report 2012-5113, 38 p., 1 pl. (<http://pubs.usgs.gov/sir/2012/5113/>)

➤ Bankfull Statistics

Bankfull Statistics Parameters [Pacific Mountain System D Bieger 2015]

| Parameter Code | Parameter Name | Value | Units | Min Limit | Max Limit |
|----------------|----------------|-------|--------------|-----------|-----------|
| DRNAREA | Drainage Area | 13.6 | square miles | 6.1776 | 8079.9147 |

Bankfull Statistics Parameters [Pacific Border P Bieger 2015]

| Parameter Code | Parameter Name | Value | Units | Min Limit | Max Limit |
|----------------|----------------|-------|-------|-----------|-----------|
|----------------|----------------|-------|-------|-----------|-----------|

| Parameter Code | Parameter Name | Value | Units | Min Limit | Max Limit |
|----------------|----------------|-------|--------------|-----------|-------------|
| DRNAREA | Drainage Area | 13.6 | square miles | 6.169878 | 3938.976756 |

Bankfull Statistics Parameters [USA Bieger 2015]

| Parameter Code | Parameter Name | Value | Units | Min Limit | Max Limit |
|----------------|----------------|-------|--------------|-----------|------------|
| DRNAREA | Drainage Area | 13.6 | square miles | 0.07722 | 59927.7393 |

Bankfull Statistics Flow Report [Pacific Mountain System D Bieger 2015]

| Statistic | Value | Unit |
|---------------------------------------|-------|-----------------|
| Bieger_D_channel_width | 37.5 | ft |
| Bieger_D_channel_depth | 2.15 | ft |
| Bieger_D_channel_cross_sectional_area | 95.5 | ft ² |

Bankfull Statistics Flow Report [Pacific Border P Bieger 2015]

| Statistic | Value | Unit |
|---------------------------------------|-------|-----------------|
| Bieger_P_channel_width | 34.6 | ft |
| Bieger_P_channel_cross_sectional_area | 95.8 | ft ² |
| Bieger_P_channel_depth | 2.23 | ft |

Bankfull Statistics Flow Report [USA Bieger 2015]

| Statistic | Value | Unit |
|---|-------|-----------------|
| Bieger_USA_channel_width | 31 | ft |
| Bieger_USA_channel_depth | 2.1 | ft |
| Bieger_USA_channel_cross_sectional_area | 70 | ft ² |

Bankfull Statistics Flow Report [Area-Averaged]

| Statistic | Value | Unit |
|---------------------------------------|-------|-----------------|
| Bieger_D_channel_width | 37.5 | ft |
| Bieger_D_channel_depth | 2.15 | ft |
| Bieger_D_channel_cross_sectional_area | 95.5 | ft ² |
| Bieger_P_channel_width | 34.6 | ft |

| Statistic | Value | Unit |
|---|-------|-----------------|
| Bieger_P_channel_cross_sectional_area | 95.8 | ft ² |
| Bieger_P_channel_depth | 2.23 | ft |
| Bieger_USA_channel_width | 31 | ft |
| Bieger_USA_channel_depth | 2.1 | ft |
| Bieger_USA_channel_cross_sectional_area | 70 | ft ² |

Bankfull Statistics Citations

Bieger, Katrin; Rathjens, Hendrik; Allen, Peter M.; and Arnold, Jeffrey G., 2015, Development and Evaluation of Bankfull Hydraulic Geometry Relationships for the Physiographic Regions of the United States, Publications from USDA-ARS / UNL Faculty, 17p. (https://digitalcommons.unl.edu/usdaarsfacpub/1515?utm_source=digitalcommons.unl.edu%2Fusdaarsfacpub%2F1515&utm_medium=PDF&utm_

USGS Data Disclaimer: Unless otherwise stated, all data, metadata and related materials are considered to satisfy the quality standards relative to the purpose for which the data were collected. Although these data and associated metadata have been reviewed for accuracy and completeness and approved for release by the U.S. Geological Survey (USGS), no warranty expressed or implied is made regarding the display or utility of the data for other purposes, nor on all computer systems, nor shall the act of distribution constitute any such warranty.

USGS Software Disclaimer: This software has been approved for release by the U.S. Geological Survey (USGS). Although the software has been subjected to rigorous review, the USGS reserves the right to update the software as needed pursuant to further analysis and review. No warranty, expressed or implied, is made by the USGS or the U.S. Government as to the functionality of the software and related material nor shall the fact of release constitute any such warranty. Furthermore, the software is released on condition that neither the USGS nor the U.S. Government shall be held liable for any damages resulting from its authorized or unauthorized use.

USGS Product Names Disclaimer: Any use of trade, firm, or product names is for descriptive purposes only and does not imply endorsement by the U.S. Government.

Application Version: 4.10.1

StreamStats Services Version: 1.2.22

NSS Services Version: 2.2.1

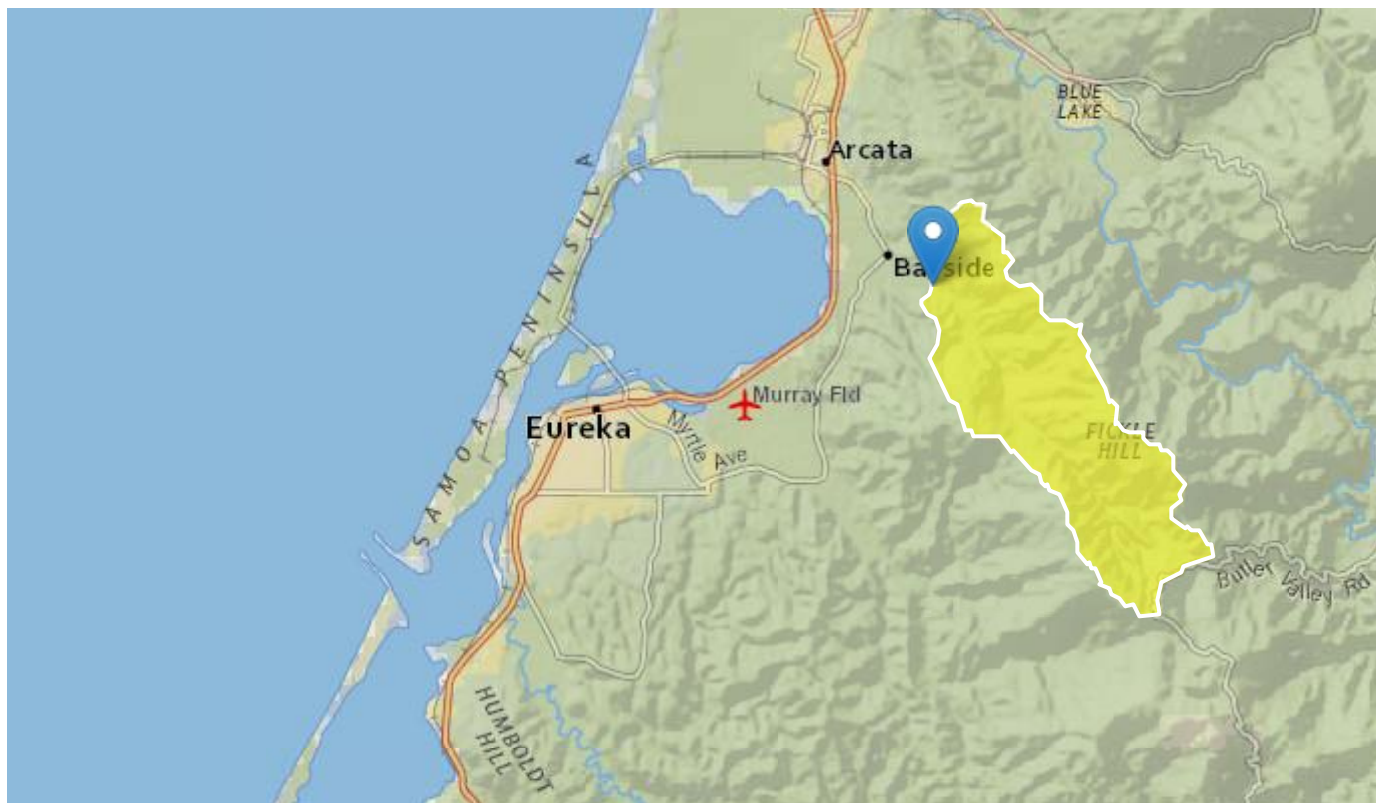
Lower Jacoby Creek D/S Monahan Creek StreamStats Report

Region ID: CA

Workspace ID: CA20220923203148095000

Clicked Point (Latitude, Longitude): 40.83427, -124.04880

Time: 2022-09-23 13:32:12 -0700



 Collapse All

➤ Basin Characteristics

| Parameter Code | Parameter Description | Value | Unit |
|----------------|---|-------|--------------|
| DRNAREA | Area that drains to a point on a stream | 15.2 | square miles |
| PRECIP | Mean Annual Precipitation | 62.1 | inches |

➤ Peak-Flow Statistics

Peak-Flow Statistics Parameters [2012 5113 Region 1 North Coast]

| Parameter Code | Parameter Name | Value | Units | Min Limit | Max Limit |
|----------------|---------------------------|-------|--------------|-----------|-----------|
| DRNAREA | Drainage Area | 15.2 | square miles | 0.04 | 3200 |
| PRECIP | Mean Annual Precipitation | 62.1 | inches | 20 | 125 |

Peak-Flow Statistics Flow Report [2012 5113 Region 1 North Coast]

PII: Prediction Interval-Lower, Plu: Prediction Interval-Upper, ASEp: Average Standard Error of Prediction, SE: Standard Error (other -- see report)

| Statistic | Value | Unit | PII | Plu | ASEp |
|-----------------------|-------|--------------------|------|-------|------|
| 50-percent AEP flood | 1230 | ft ³ /s | 506 | 2990 | 58.6 |
| 20-percent AEP flood | 2200 | ft ³ /s | 1060 | 4590 | 47.4 |
| 10-percent AEP flood | 2870 | ft ³ /s | 1430 | 5760 | 44.2 |
| 4-percent AEP flood | 3750 | ft ³ /s | 1930 | 7290 | 42.7 |
| 2-percent AEP flood | 4410 | ft ³ /s | 2270 | 8590 | 42.7 |
| 1-percent AEP flood | 5080 | ft ³ /s | 2550 | 10100 | 44.3 |
| 0.5-percent AEP flood | 5720 | ft ³ /s | 2860 | 11400 | 44.4 |
| 0.2-percent AEP flood | 6570 | ft ³ /s | 3210 | 13400 | 46 |

Peak-Flow Statistics Citations

Gotvald, A.J., Barth, N.A., Veilleux, A.G., and Parrett, Charles, 2012, Methods for determining magnitude and frequency of floods in California, based on data through water year 2006: U.S. Geological Survey Scientific Investigations Report 2012-5113, 38 p., 1 pl. (<http://pubs.usgs.gov/sir/2012/5113/>)

➤ **Bankfull Statistics**

Bankfull Statistics Parameters [Pacific Mountain System D Bieger 2015]

| Parameter Code | Parameter Name | Value | Units | Min Limit | Max Limit |
|----------------|----------------|-------|--------------|-----------|-----------|
| DRNAREA | Drainage Area | 15.2 | square miles | 6.1776 | 8079.9147 |

Bankfull Statistics Parameters [Pacific Border P Bieger 2015]

| Parameter Code | Parameter Name | Value | Units | Min Limit | Max Limit |
|----------------|----------------|-------|-------|-----------|-----------|
|----------------|----------------|-------|-------|-----------|-----------|

| Parameter Code | Parameter Name | Value | Units | Min Limit | Max Limit |
|----------------|----------------|-------|--------------|-----------|-------------|
| DRNAREA | Drainage Area | 15.2 | square miles | 6.169878 | 3938.976756 |

Bankfull Statistics Parameters [USA Bieger 2015]

| Parameter Code | Parameter Name | Value | Units | Min Limit | Max Limit |
|----------------|----------------|-------|--------------|-----------|------------|
| DRNAREA | Drainage Area | 15.2 | square miles | 0.07722 | 59927.7393 |

Bankfull Statistics Flow Report [Pacific Mountain System D Bieger 2015]

| Statistic | Value | Unit |
|---------------------------------------|-------|-----------------|
| Bieger_D_channel_width | 39.2 | ft |
| Bieger_D_channel_depth | 2.22 | ft |
| Bieger_D_channel_cross_sectional_area | 103 | ft ² |

Bankfull Statistics Flow Report [Pacific Border P Bieger 2015]

| Statistic | Value | Unit |
|---------------------------------------|-------|-----------------|
| Bieger_P_channel_width | 36.3 | ft |
| Bieger_P_channel_cross_sectional_area | 104 | ft ² |
| Bieger_P_channel_depth | 2.32 | ft |

Bankfull Statistics Flow Report [USA Bieger 2015]

| Statistic | Value | Unit |
|---|-------|-----------------|
| Bieger_USA_channel_width | 32.3 | ft |
| Bieger_USA_channel_depth | 2.15 | ft |
| Bieger_USA_channel_cross_sectional_area | 74.3 | ft ² |

Bankfull Statistics Flow Report [Area-Averaged]

| Statistic | Value | Unit |
|---------------------------------------|-------|-----------------|
| Bieger_D_channel_width | 39.2 | ft |
| Bieger_D_channel_depth | 2.22 | ft |
| Bieger_D_channel_cross_sectional_area | 103 | ft ² |
| Bieger_P_channel_width | 36.3 | ft |

| Statistic | Value | Unit |
|---|-------|-----------------|
| Bieger_P_channel_cross_sectional_area | 104 | ft ² |
| Bieger_P_channel_depth | 2.32 | ft |
| Bieger_USA_channel_width | 32.3 | ft |
| Bieger_USA_channel_depth | 2.15 | ft |
| Bieger_USA_channel_cross_sectional_area | 74.3 | ft ² |

Bankfull Statistics Citations

Bieger, Katrin; Rathjens, Hendrik; Allen, Peter M.; and Arnold, Jeffrey G., 2015, Development and Evaluation of Bankfull Hydraulic Geometry Relationships for the Physiographic Regions of the United States, Publications from USDA-ARS / UNL Faculty, 17p. (https://digitalcommons.unl.edu/usdaarsfacpub/1515?utm_source=digitalcommons.unl.edu%2Fusdaarsfacpub%2F1515&utm_medium=PDF&utm_

USGS Data Disclaimer: Unless otherwise stated, all data, metadata and related materials are considered to satisfy the quality standards relative to the purpose for which the data were collected. Although these data and associated metadata have been reviewed for accuracy and completeness and approved for release by the U.S. Geological Survey (USGS), no warranty expressed or implied is made regarding the display or utility of the data for other purposes, nor on all computer systems, nor shall the act of distribution constitute any such warranty.

USGS Software Disclaimer: This software has been approved for release by the U.S. Geological Survey (USGS). Although the software has been subjected to rigorous review, the USGS reserves the right to update the software as needed pursuant to further analysis and review. No warranty, expressed or implied, is made by the USGS or the U.S. Government as to the functionality of the software and related material nor shall the fact of release constitute any such warranty. Furthermore, the software is released on condition that neither the USGS nor the U.S. Government shall be held liable for any damages resulting from its authorized or unauthorized use.

USGS Product Names Disclaimer: Any use of trade, firm, or product names is for descriptive purposes only and does not imply endorsement by the U.S. Government.

Application Version: 4.10.1

StreamStats Services Version: 1.2.22

NSS Services Version: 2.2.1

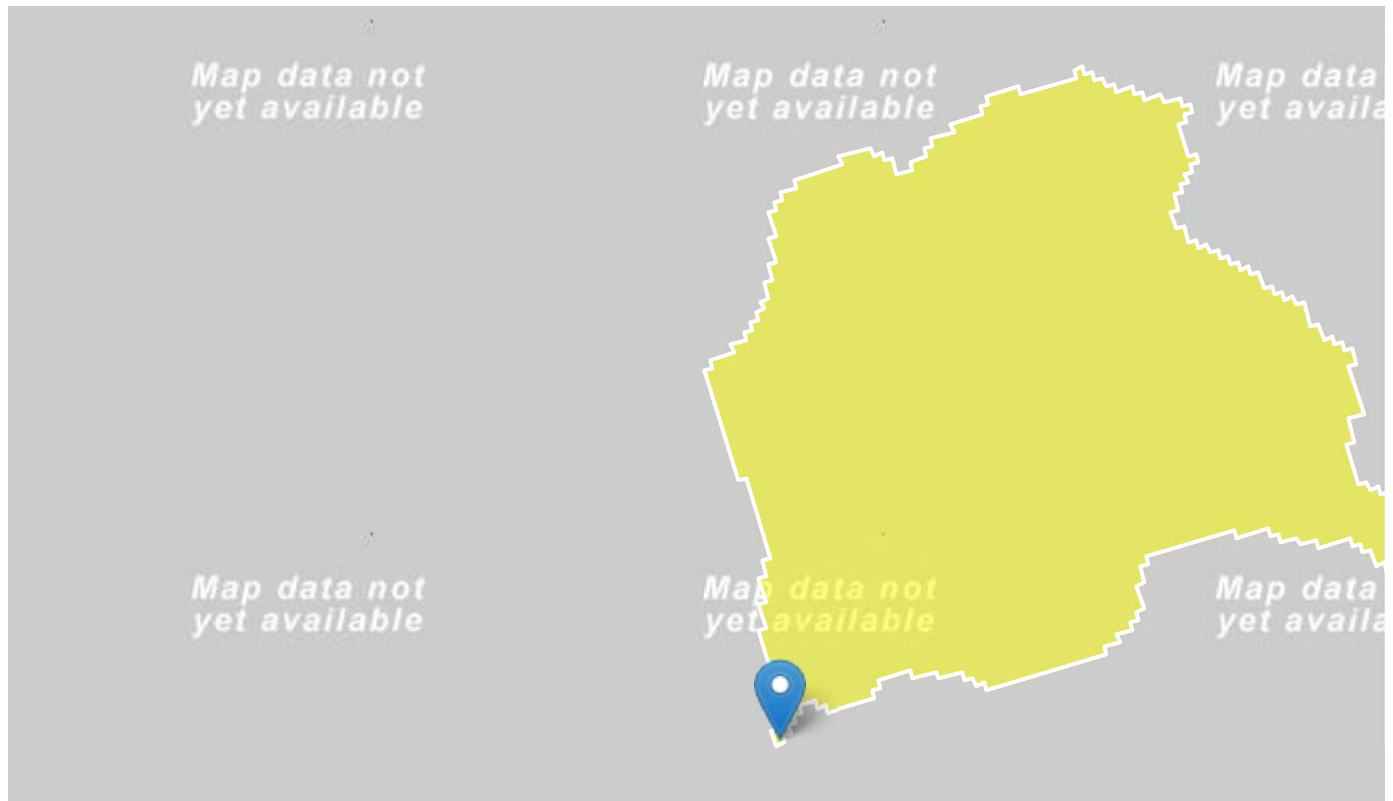
Golf Course Creek StreamStats Report

Region ID: CA

Workspace ID: CA20220921234318034000

Clicked Point (Latitude, Longitude): 40.83458, -124.04852

Time: 2022-09-21 16:43:45 -0700



+ Collapse All

> Basin Characteristics

| Parameter Code | Parameter Description | Value | Unit |
|----------------|---|-------|--------------|
| DRNAREA | Area that drains to a point on a stream | 1.4 | square miles |
| PRECIP | Mean Annual Precipitation | 51.9 | inches |

> Peak-Flow Statistics

Peak-Flow Statistics Parameters [2012 5113 Region 1 North Coast]

| Parameter Code | Parameter Name | Value | Units | Min Limit | Max Limit |
|----------------|---------------------------|-------|--------------|-----------|-----------|
| DRNAREA | Drainage Area | 1.4 | square miles | 0.04 | 3200 |
| PRECIP | Mean Annual Precipitation | 51.9 | inches | 20 | 125 |

Peak-Flow Statistics Flow Report [2012 5113 Region 1 North Coast]

PII: Prediction Interval-Lower, Plu: Prediction Interval-Upper, ASEp: Average Standard Error of Prediction, SE: Standard Error (other -- see report)

| Statistic | Value | Unit | PII | Plu | ASEp |
|-----------------------|-------|--------------------|------|------|------|
| 50-percent AEP flood | 120 | ft ³ /s | 48.9 | 294 | 58.6 |
| 20-percent AEP flood | 231 | ft ³ /s | 110 | 486 | 47.4 |
| 10-percent AEP flood | 311 | ft ³ /s | 153 | 630 | 44.2 |
| 4-percent AEP flood | 417 | ft ³ /s | 212 | 819 | 42.7 |
| 2-percent AEP flood | 498 | ft ³ /s | 253 | 981 | 42.7 |
| 1-percent AEP flood | 583 | ft ³ /s | 289 | 1180 | 44.3 |
| 0.5-percent AEP flood | 664 | ft ³ /s | 328 | 1340 | 44.4 |
| 0.2-percent AEP flood | 772 | ft ³ /s | 372 | 1600 | 46 |

Peak-Flow Statistics Citations

Gotvald, A.J., Barth, N.A., Veilleux, A.G., and Parrett, Charles, 2012, Methods for determining magnitude and frequency of floods in California, based on data through water year 2006: U.S. Geological Survey Scientific Investigations Report 2012-5113, 38 p., 1 pl. (<http://pubs.usgs.gov/sir/2012/5113/>)

➤ **Bankfull Statistics**

Bankfull Statistics Parameters [Pacific Mountain System D Bieger 2015]

| Parameter Code | Parameter Name | Value | Units | Min Limit | Max Limit |
|----------------|----------------|-------|--------------|-----------|-----------|
| DRNAREA | Drainage Area | 1.4 | square miles | 6.1776 | 8079.9147 |

Bankfull Statistics Parameters [Pacific Border P Bieger 2015]

| Parameter Code | Parameter Name | Value | Units | Min Limit | Max Limit |
|----------------|----------------|-------|-------|-----------|-----------|
|----------------|----------------|-------|-------|-----------|-----------|

| Parameter Code | Parameter Name | Value | Units | Min Limit | Max Limit |
|----------------|----------------|-------|--------------|-----------|-------------|
| DRNAREA | Drainage Area | 1.4 | square miles | 6.169878 | 3938.976756 |

Bankfull Statistics Parameters [USA Bieger 2015]

| Parameter Code | Parameter Name | Value | Units | Min Limit | Max Limit |
|----------------|----------------|-------|--------------|-----------|------------|
| DRNAREA | Drainage Area | 1.4 | square miles | 0.07722 | 59927.7393 |

Bankfull Statistics Disclaimers [Pacific Mountain System D Bieger 2015]

One or more of the parameters is outside the suggested range. Estimates were extrapolated with unknown errors.

Bankfull Statistics Flow Report [Pacific Mountain System D Bieger 2015]

| Statistic | Value | Unit |
|---------------------------------------|-------|-----------------|
| Bieger_D_channel_width | 15.1 | ft |
| Bieger_D_channel_depth | 1.1 | ft |
| Bieger_D_channel_cross_sectional_area | 21.7 | ft ² |

Bankfull Statistics Disclaimers [Pacific Border P Bieger 2015]

One or more of the parameters is outside the suggested range. Estimates were extrapolated with unknown errors.

Bankfull Statistics Flow Report [Pacific Border P Bieger 2015]

| Statistic | Value | Unit |
|---------------------------------------|-------|-----------------|
| Bieger_P_channel_width | 12.7 | ft |
| Bieger_P_channel_cross_sectional_area | 19.1 | ft ² |
| Bieger_P_channel_depth | 1.05 | ft |

Bankfull Statistics Flow Report [USA Bieger 2015]

| Statistic | Value | Unit |
|---|-------|-----------------|
| Bieger_USA_channel_width | 13.9 | ft |
| Bieger_USA_channel_depth | 1.3 | ft |
| Bieger_USA_channel_cross_sectional_area | 20.5 | ft ² |

Bankfull Statistics Flow Report [Area-Averaged]

| Statistic | Value | Unit |
|---|-------|-----------------|
| Bieger_D_channel_width | 15.1 | ft |
| Bieger_D_channel_depth | 1.1 | ft |
| Bieger_D_channel_cross_sectional_area | 21.7 | ft ² |
| Bieger_P_channel_width | 12.7 | ft |
| Bieger_P_channel_cross_sectional_area | 19.1 | ft ² |
| Bieger_P_channel_depth | 1.05 | ft |
| Bieger_USA_channel_width | 13.9 | ft |
| Bieger_USA_channel_depth | 1.3 | ft |
| Bieger_USA_channel_cross_sectional_area | 20.5 | ft ² |

Bankfull Statistics Citations

Bieger, Katrin; Rathjens, Hendrik; Allen, Peter M.; and Arnold, Jeffrey G., 2015, Development and Evaluation of Bankfull Hydraulic Geometry Relationships for the Physiographic Regions of the United States, Publications from USDA-ARS / UNL Faculty, 17p. (https://digitalcommons.unl.edu/usdaarsfacpub/1515?utm_source=digitalcommons.unl.edu%2Fusdaarsfacpub%2F1515&utm_medium=PDF&utm_

USGS Data Disclaimer: Unless otherwise stated, all data, metadata and related materials are considered to satisfy the quality standards relative to the purpose for which the data were collected. Although these data and associated metadata have been reviewed for accuracy and completeness and approved for release by the U.S. Geological Survey (USGS), no warranty expressed or implied is made regarding the display or utility of the data for other purposes, nor on all computer systems, nor shall the act of distribution constitute any such warranty.

USGS Software Disclaimer: This software has been approved for release by the U.S. Geological Survey (USGS). Although the software has been subjected to rigorous review, the USGS reserves the right to update the software as needed pursuant to further analysis and review. No warranty, expressed or implied, is made by the USGS or the U.S. Government as to the functionality of the software and related material nor shall the fact of release constitute any such warranty. Furthermore, the software is released on condition that neither the USGS nor the U.S. Government shall be held liable for any damages resulting from its authorized or unauthorized use.

USGS Product Names Disclaimer: Any use of trade, firm, or product names is for descriptive purposes only and does not imply endorsement by the U.S. Government.

Application Version: 4.10.1

StreamStats Services Version: 1.2.22

NSS Services Version: 2.2.1

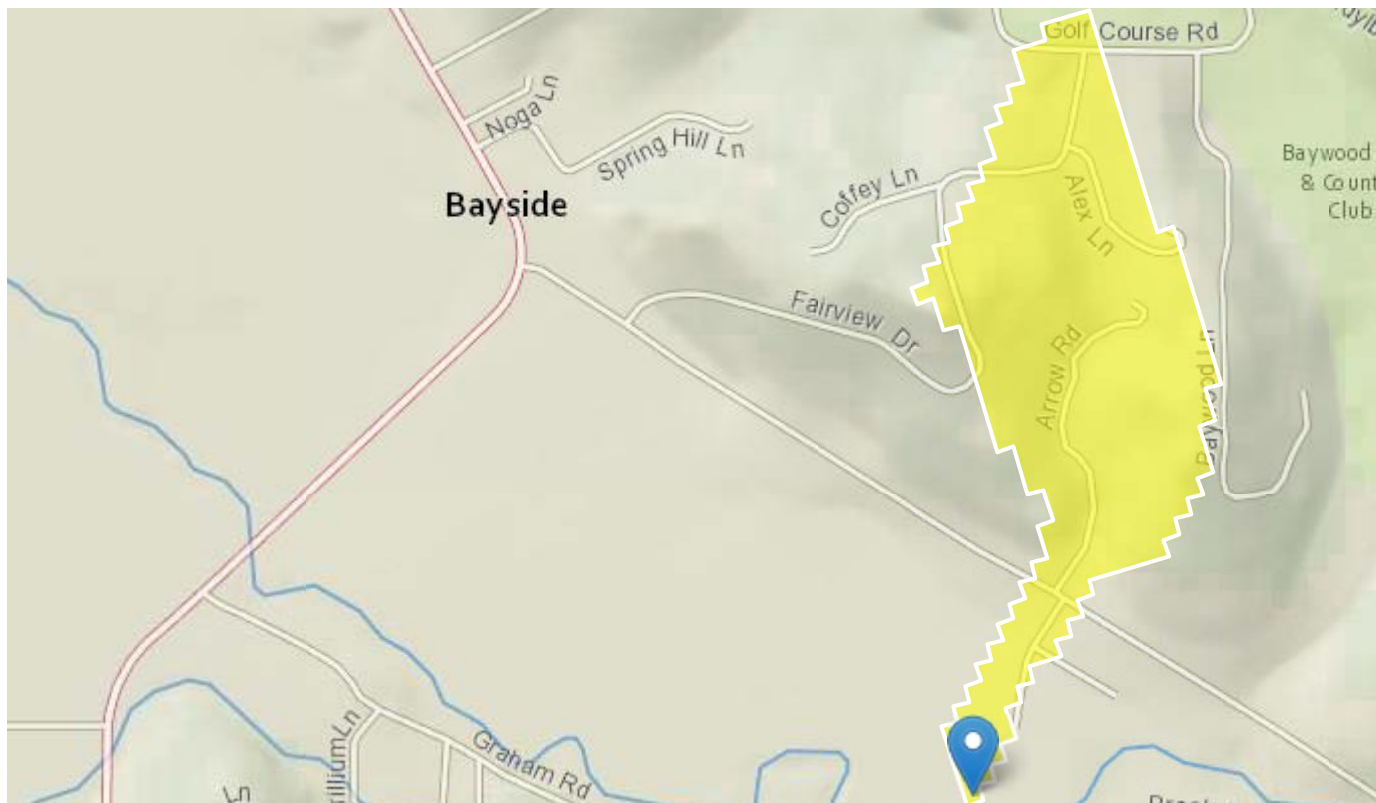
Upper Pond Trib StreamStats Report

Region ID: CA

Workspace ID: CA20220922234933679000

Clicked Point (Latitude, Longitude): 40.83395, -124.05422

Time: 2022-09-22 16:49:56 -0700



+ Collapse All

➤ Basin Characteristics

| Parameter Code | Parameter Description | Value | Unit |
|----------------|---|-------|--------------|
| DRNAREA | Area that drains to a point on a stream | 0.1 | square miles |
| PRECIP | Mean Annual Precipitation | 46 | inches |

➤ Peak-Flow Statistics

Peak-Flow Statistics Parameters [2012 5113 Region 1 North Coast]

| Parameter Code | Parameter Name | Value | Units | Min Limit | Max Limit |
|----------------|---------------------------|-------|--------------|-----------|-----------|
| DRNAREA | Drainage Area | 0.1 | square miles | 0.04 | 3200 |
| PRECIP | Mean Annual Precipitation | 46 | inches | 20 | 125 |

Peak-Flow Statistics Flow Report [2012 5113 Region 1 North Coast]

PII: Prediction Interval-Lower, Plu: Prediction Interval-Upper, ASEp: Average Standard Error of Prediction, SE: Standard Error (other -- see report)

| Statistic | Value | Unit | PII | Plu | ASEp |
|-----------------------|-------|--------------------|------|------|------|
| 50-percent AEP flood | 9.79 | ft ³ /s | 3.91 | 24.5 | 58.6 |
| 20-percent AEP flood | 20.2 | ft ³ /s | 9.43 | 43.3 | 47.4 |
| 10-percent AEP flood | 28 | ft ³ /s | 13.6 | 57.8 | 44.2 |
| 4-percent AEP flood | 38.5 | ft ³ /s | 19.2 | 77.2 | 42.7 |
| 2-percent AEP flood | 46.7 | ft ³ /s | 23.2 | 94.1 | 42.7 |
| 1-percent AEP flood | 55.5 | ft ³ /s | 26.9 | 115 | 44.3 |
| 0.5-percent AEP flood | 63.9 | ft ³ /s | 30.8 | 133 | 44.4 |
| 0.2-percent AEP flood | 75.1 | ft ³ /s | 35.3 | 160 | 46 |

Peak-Flow Statistics Citations

Gotvald, A.J., Barth, N.A., Veilleux, A.G., and Parrett, Charles, 2012, Methods for determining magnitude and frequency of floods in California, based on data through water year 2006: U.S. Geological Survey Scientific Investigations Report 2012-5113, 38 p., 1 pl. (<http://pubs.usgs.gov/sir/2012/5113/>)

➤ Bankfull Statistics

Bankfull Statistics Parameters [Pacific Mountain System D Bieger 2015]

| Parameter Code | Parameter Name | Value | Units | Min Limit | Max Limit |
|----------------|----------------|-------|--------------|-----------|-----------|
| DRNAREA | Drainage Area | 0.1 | square miles | 6.1776 | 8079.9147 |

Bankfull Statistics Parameters [Pacific Border P Bieger 2015]

| Parameter Code | Parameter Name | Value | Units | Min Limit | Max Limit |
|----------------|----------------|-------|-------|-----------|-----------|
|----------------|----------------|-------|-------|-----------|-----------|

| Parameter Code | Parameter Name | Value | Units | Min Limit | Max Limit |
|----------------|----------------|-------|--------------|-----------|-------------|
| DRNAREA | Drainage Area | 0.1 | square miles | 6.169878 | 3938.976756 |

Bankfull Statistics Parameters [USA Bieger 2015]

| Parameter Code | Parameter Name | Value | Units | Min Limit | Max Limit |
|----------------|----------------|-------|--------------|-----------|------------|
| DRNAREA | Drainage Area | 0.1 | square miles | 0.07722 | 59927.7393 |

Bankfull Statistics Disclaimers [Pacific Mountain System D Bieger 2015]

One or more of the parameters is outside the suggested range. Estimates were extrapolated with unknown errors.

Bankfull Statistics Flow Report [Pacific Mountain System D Bieger 2015]

| Statistic | Value | Unit |
|---------------------------------------|-------|-----------------|
| Bieger_D_channel_width | 5.28 | ft |
| Bieger_D_channel_depth | 0.507 | ft |
| Bieger_D_channel_cross_sectional_area | 3.88 | ft ² |

Bankfull Statistics Disclaimers [Pacific Border P Bieger 2015]

One or more of the parameters is outside the suggested range. Estimates were extrapolated with unknown errors.

Bankfull Statistics Flow Report [Pacific Border P Bieger 2015]

| Statistic | Value | Unit |
|---------------------------------------|-------|-----------------|
| Bieger_P_channel_width | 3.98 | ft |
| Bieger_P_channel_cross_sectional_area | 2.93 | ft ² |
| Bieger_P_channel_depth | 0.441 | ft |

Bankfull Statistics Flow Report [USA Bieger 2015]

| Statistic | Value | Unit |
|---|-------|-----------------|
| Bieger_USA_channel_width | 5.51 | ft |
| Bieger_USA_channel_depth | 0.738 | ft |
| Bieger_USA_channel_cross_sectional_area | 4.93 | ft ² |

Bankfull Statistics Flow Report [Area-Averaged]

| Statistic | Value | Unit |
|---|-------|-----------------|
| Bieger_D_channel_width | 5.28 | ft |
| Bieger_D_channel_depth | 0.507 | ft |
| Bieger_D_channel_cross_sectional_area | 3.88 | ft ² |
| Bieger_P_channel_width | 3.98 | ft |
| Bieger_P_channel_cross_sectional_area | 2.93 | ft ² |
| Bieger_P_channel_depth | 0.441 | ft |
| Bieger_USA_channel_width | 5.51 | ft |
| Bieger_USA_channel_depth | 0.738 | ft |
| Bieger_USA_channel_cross_sectional_area | 4.93 | ft ² |

Bankfull Statistics Citations

Bieger, Katrin; Rathjens, Hendrik; Allen, Peter M.; and Arnold, Jeffrey G., 2015, Development and Evaluation of Bankfull Hydraulic Geometry Relationships for the Physiographic Regions of the United States, Publications from USDA-ARS / UNL Faculty, 17p. (https://digitalcommons.unl.edu/usdaarsfacpub/1515?utm_source=digitalcommons.unl.edu%2Fusdaarsfacpub%2F1515&utm_medium=PDF&utm_

USGS Data Disclaimer: Unless otherwise stated, all data, metadata and related materials are considered to satisfy the quality standards relative to the purpose for which the data were collected. Although these data and associated metadata have been reviewed for accuracy and completeness and approved for release by the U.S. Geological Survey (USGS), no warranty expressed or implied is made regarding the display or utility of the data for other purposes, nor on all computer systems, nor shall the act of distribution constitute any such warranty.

USGS Software Disclaimer: This software has been approved for release by the U.S. Geological Survey (USGS). Although the software has been subjected to rigorous review, the USGS reserves the right to update the software as needed pursuant to further analysis and review. No warranty, expressed or implied, is made by the USGS or the U.S. Government as to the functionality of the software and related material nor shall the fact of release constitute any such warranty. Furthermore, the software is released on condition that neither the USGS nor the U.S. Government shall be held liable for any damages resulting from its authorized or unauthorized use.

USGS Product Names Disclaimer: Any use of trade, firm, or product names is for descriptive purposes only and does not imply endorsement by the U.S. Government.

Application Version: 4.10.1

StreamStats Services Version: 1.2.22

NSS Services Version: 2.2.1

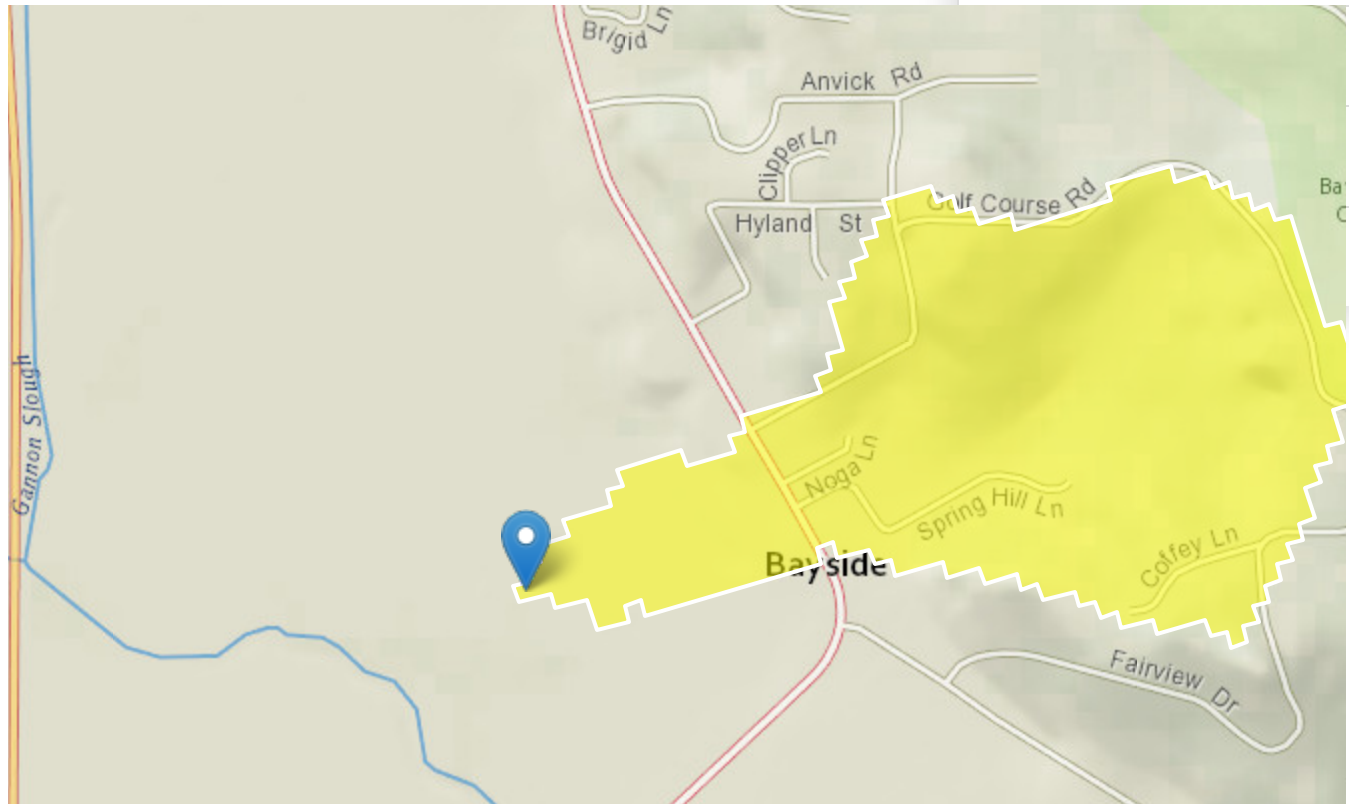
Spring Hill StreamStats Report

Exploration Tools
Region ID: CA

Workspace ID: CA20221018174941816000

Clicked Point (Latitude, Longitude): 40.84303, -124.07073

Time: 2022-10-18 10:50:07 -0700



[+ Collapse All](#)

➤ Basin Characteristics

| Parameter Code | Parameter Description | Value | Unit |
|----------------|---|-------|--------------|
| DRNAREA | Area that drains to a point on a stream | 0.3 | square miles |
| PRECIP | Mean Annual Precipitation | 44.8 | inches |

➤ Peak-Flow Statistics

Peak-Flow Statistics Parameters [2012 5113 Region 1 North Coast]

| Parameter Code | Parameter Name | Value | Units | Min Limit | Max Limit |
|----------------|---------------------------|-------|--------------|-----------|-----------|
| DRNAREA | Drainage Area | 0.3 | square miles | 0.04 | 3200 |
| PRECIP | Mean Annual Precipitation | 44.8 | inches | 20 | 125 |

Peak-Flow Statistics Flow Report [2012 5113 Region 1 North Coast]

PII: Prediction Interval-Lower, Plu: Prediction Interval-Upper, ASEp: Average Standard Error of Prediction, SE: Standard Error (other -- see report)

| Statistic | Value | Unit | PII | Plu | ASEp |
|-----------------------|-------|--------------------|------|------|------|
| 50-percent AEP flood | 25.7 | ft ³ /s | 10.4 | 63.7 | 58.6 |
| 20-percent AEP flood | 52.5 | ft ³ /s | 24.7 | 112 | 47.4 |
| 10-percent AEP flood | 72.3 | ft ³ /s | 35.3 | 148 | 44.2 |
| 4-percent AEP flood | 98.9 | ft ³ /s | 49.7 | 197 | 42.7 |
| 2-percent AEP flood | 120 | ft ³ /s | 60.1 | 239 | 42.7 |
| 1-percent AEP flood | 142 | ft ³ /s | 69.4 | 291 | 44.3 |
| 0.5-percent AEP flood | 163 | ft ³ /s | 79.4 | 335 | 44.4 |
| 0.2-percent AEP flood | 191 | ft ³ /s | 90.7 | 402 | 46 |

Peak-Flow Statistics Citations

Gotvald, A.J., Barth, N.A., Veilleux, A.G., and Parrett, Charles, 2012, Methods for determining magnitude and frequency of floods in California, based on data through water year 2006: U.S. Geological Survey Scientific Investigations Report 2012-5113, 38 p., 1 pl. (<http://pubs.usgs.gov/sir/2012/5113/>)

USGS Data Disclaimer: Unless otherwise stated, all data, metadata and related materials are considered to satisfy the quality standards relative to the purpose for which the data were collected. Although these data and associated metadata have been reviewed for accuracy and completeness and approved for release by the U.S. Geological Survey (USGS), no warranty expressed or implied is made regarding the display or utility of the data for other purposes, nor on all computer systems, nor shall the act of distribution constitute any such warranty.

USGS Software Disclaimer: This software has been approved for release by the U.S. Geological Survey (USGS). Although the software has been subjected to rigorous review, the USGS reserves the right to update the software as needed pursuant to further analysis and review. No warranty, expressed or implied, is made by the USGS or the U.S. Government as to the functionality of the software and related material nor shall the fact of release constitute any such warranty. Furthermore, the software is released on condition that neither the USGS nor the U.S. Government shall be held liable for any damages resulting from its authorized or unauthorized use.

USGS Product Names Disclaimer: Any use of trade, firm, or product names is for descriptive purposes only and does not imply endorsement by the U.S. Government.

Application Version: 4.10.1

StreamStats Services Version: 1.2.22

NSS Services Version: 2.2.1

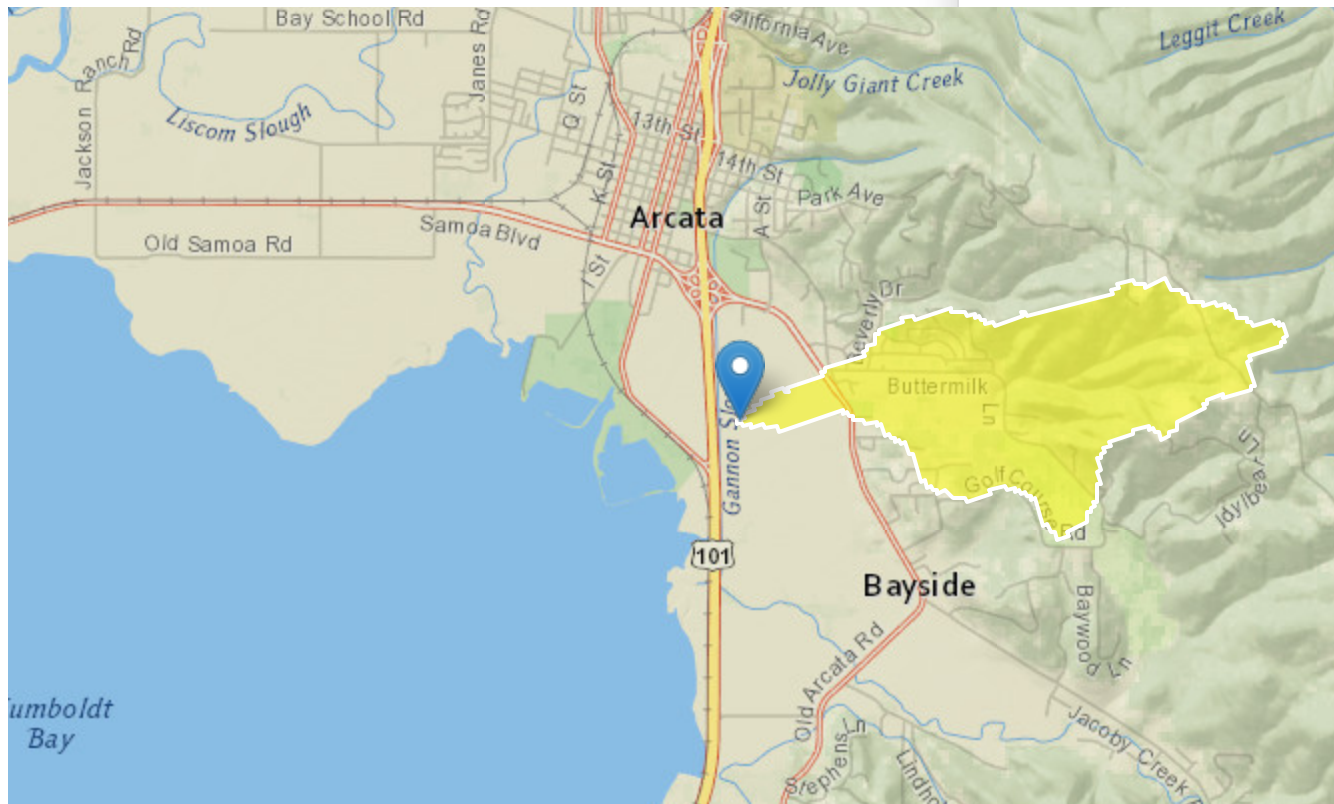
Beith Creek StreamStats Report

Exploration Tools
Region ID: CA

Workspace ID: CA20221018192154655000

Clicked Point (Latitude, Longitude): 40.85414, -124.07989

Time: 2022-10-18 12:22:23 -0700



+ Collapse All

➤ Basin Characteristics

| Parameter Code | Parameter Description | Value | Unit |
|----------------|---|-------|--------------|
| DRNAREA | Area that drains to a point on a stream | 1.3 | square miles |
| PRECIP | Mean Annual Precipitation | 48.7 | inches |

➤ Peak-Flow Statistics

Peak-Flow Statistics Parameters [2012 5113 Region 1 North Coast]

| Parameter Code | Parameter Name | Value | Units | Min Limit | Max Limit |
|----------------|---------------------------|-------|--------------|-----------|-----------|
| DRNAREA | Drainage Area | 1.3 | square miles | 0.04 | 3200 |
| PRECIP | Mean Annual Precipitation | 48.7 | inches | 20 | 125 |

Peak-Flow Statistics Flow Report [2012 5113 Region 1 North Coast]

PII: Prediction Interval-Lower, Plu: Prediction Interval-Upper, ASEp: Average Standard Error of Prediction, SE: Standard Error (other -- see report)

| Statistic | Value | Unit | PII | Plu | ASEp |
|-----------------------|-------|--------------------|------|------|------|
| 50-percent AEP flood | 105 | ft ³ /s | 42.8 | 258 | 58.6 |
| 20-percent AEP flood | 206 | ft ³ /s | 97.9 | 433 | 47.4 |
| 10-percent AEP flood | 279 | ft ³ /s | 138 | 566 | 44.2 |
| 4-percent AEP flood | 375 | ft ³ /s | 191 | 737 | 42.7 |
| 2-percent AEP flood | 450 | ft ³ /s | 228 | 887 | 42.7 |
| 1-percent AEP flood | 528 | ft ³ /s | 261 | 1070 | 44.3 |
| 0.5-percent AEP flood | 602 | ft ³ /s | 297 | 1220 | 44.4 |
| 0.2-percent AEP flood | 702 | ft ³ /s | 338 | 1460 | 46 |

Peak-Flow Statistics Citations

Gotvald, A.J., Barth, N.A., Veilleux, A.G., and Parrett, Charles, 2012, Methods for determining magnitude and frequency of floods in California, based on data through water year 2006: U.S. Geological Survey Scientific Investigations Report 2012-5113, 38 p., 1 pl. (<http://pubs.usgs.gov/sir/2012/5113/>)

USGS Data Disclaimer: Unless otherwise stated, all data, metadata and related materials are considered to satisfy the quality standards relative to the purpose for which the data were collected. Although these data and associated metadata have been reviewed for accuracy and completeness and approved for release by the U.S. Geological Survey (USGS), no warranty expressed or implied is made regarding the display or utility of the data for other purposes, nor on all computer systems, nor shall the act of distribution constitute any such warranty.

USGS Software Disclaimer: This software has been approved for release by the U.S. Geological Survey (USGS). Although the software has been subjected to rigorous review, the USGS reserves the right to update the software as needed pursuant to further analysis and review. No warranty, expressed or implied, is made by the USGS or the U.S. Government as to the functionality of the software and related material nor shall the fact of release constitute any such warranty. Furthermore, the software is released on condition that neither the USGS nor the U.S. Government shall be held liable for any damages resulting from its authorized or unauthorized use.

USGS Product Names Disclaimer: Any use of trade, firm, or product names is for descriptive purposes only and does not imply endorsement by the U.S. Government.

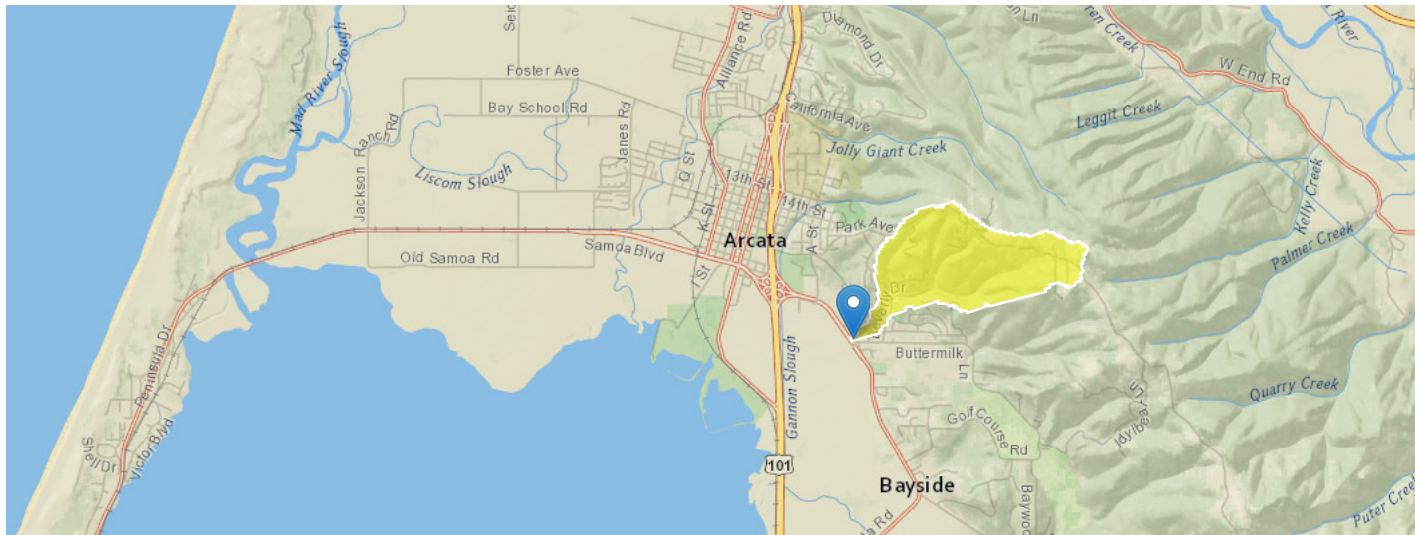
Application Version: 4.10.1

StreamStats Services Version: 1.2.22

NSS Services Version: 2.2.1

Grtozman StreamStats Report

Region ID: CA
 Workspace ID: CA20231130004953780000
 Clicked Point (Latitude, Longitude): 40.85769, -124.07272
 Time: 2023-11-29 16:50:20 -0800



Collapse All

Basin Characteristics

| Parameter Code | Parameter Description | Value | Unit |
|----------------|--|------------|--------------|
| BASINPERIM | Perimeter of the drainage basin as defined in SIR 2004-5262 | 5.37 | miles |
| BSLDEM30M | Mean basin slope computed from 30 m DEM | 24.1 | percent |
| CENTROXA83 | X coordinate of the centroid, in NAD_1983_Albers, meters | -2311806.7 | meters |
| CENTROYA83 | Basin centroid horizontal (y) location in NAD 1983 Albers | 2327646.7 | meters |
| DRNAREA | Area that drains to a point on a stream | 0.7 | square miles |
| EL6000 | Percent of area above 6000 ft | 0 | percent |
| ELEV | Mean Basin Elevation | 541 | feet |
| ELEVMAX | Maximum basin elevation | 1193 | feet |
| FOREST | Percentage of area covered by forest | 69.8 | percent |
| JANMAXTMP | Mean Maximum January Temperature | 53.67 | degrees F |
| JANMINTMP | Mean Minimum January Temperature | 37.99 | degrees F |
| LAKEAREA | Percentage of Lakes and Ponds | 0 | percent |
| LC11DEV | Percentage of developed (urban) land from NLCD 2011 classes 21-24 | 30.3 | percent |
| LC11IMP | Average percentage of impervious area determined from NLCD 2011 impervious dataset | 3 | percent |
| LFLENGTH | Length of longest flow path | 2 | miles |
| MINBELEV | Minimum basin elevation | 16 | feet |
| OUTLETELEV | Elevation of the stream outlet in feet above NAVD88 | 16 | feet |
| PRECIP | Mean Annual Precipitation | 49.2 | inches |
| RELIEF | Maximum - minimum elevation | 1177 | feet |
| RELRELF | Basin relief divided by basin perimeter | 219 | feet per mi |

➤ Peak-Flow Statistics

Peak-Flow Statistics Parameters [2012 5113 Region 1 North Coast]

| Parameter Code | Parameter Name | Value | Units | Min Limit | Max Limit |
|----------------|---------------------------|-------|--------------|-----------|-----------|
| DRNAREA | Drainage Area | 0.7 | square miles | 0.04 | 3200 |
| PRECIP | Mean Annual Precipitation | 49.2 | inches | 20 | 125 |

Peak-Flow Statistics Flow Report [2012 5113 Region 1 North Coast]

PIL: Lower 90% Prediction Interval, PIU: Upper 90% Prediction Interval, ASEp: Average Standard Error of Prediction, SE: Standard Error (other -- see report)

| Statistic | Value | Unit | PIL | PIU | ASEp |
|-----------------------|-------|--------------------|------|-----|------|
| 50-percent AEP flood | 60.7 | ft ³ /s | 24.6 | 150 | 58.6 |
| 20-percent AEP flood | 120 | ft ³ /s | 56.8 | 253 | 47.4 |
| 10-percent AEP flood | 163 | ft ³ /s | 80.1 | 332 | 44.2 |
| 4-percent AEP flood | 220 | ft ³ /s | 111 | 434 | 42.7 |
| 2-percent AEP flood | 264 | ft ³ /s | 133 | 523 | 42.7 |
| 1-percent AEP flood | 311 | ft ³ /s | 153 | 631 | 44.3 |
| 0.5-percent AEP flood | 355 | ft ³ /s | 174 | 723 | 44.4 |
| 0.2-percent AEP flood | 414 | ft ³ /s | 198 | 864 | 46 |

Peak-Flow Statistics Citations

Gotvald, A.J., Barth, N.A., Veilleux, A.G., and Parrett, Charles, 2012, Methods for determining magnitude and frequency of floods in California, based on data through water year 2006: U.S. Geological Survey Scientific Investigations Report 2012-5113, 38 p., 1 pl. (<http://pubs.usgs.gov/sir/2012/5113/>)

➤ Bankfull Statistics

Bankfull Statistics Parameters [Pacific Mountain System D Bieger 2015]

| Parameter Code | Parameter Name | Value | Units | Min Limit | Max Limit |
|----------------|----------------|-------|--------------|-----------|-----------|
| DRNAREA | Drainage Area | 0.7 | square miles | 6.1776 | 8079.9147 |

Bankfull Statistics Parameters [Pacific Border P Bieger 2015]

| Parameter Code | Parameter Name | Value | Units | Min Limit | Max Limit |
|----------------|----------------|-------|--------------|-----------|-------------|
| DRNAREA | Drainage Area | 0.7 | square miles | 6.169878 | 3938.976756 |

Bankfull Statistics Parameters [USA Bieger 2015]

| Parameter Code | Parameter Name | Value | Units | Min Limit | Max Limit |
|----------------|----------------|-------|--------------|-----------|------------|
| DRNAREA | Drainage Area | 0.7 | square miles | 0.07722 | 59927.7393 |

Bankfull Statistics Disclaimers [Pacific Mountain System D Bieger 2015]

One or more of the parameters is outside the suggested range. Estimates were extrapolated with unknown errors.

Bankfull Statistics Flow Report [Pacific Mountain System D Bieger 2015]

| Statistic | Value | Unit |
|---------------------------------------|-------|-----------------|
| Bieger_D_channel_width | 11.5 | ft |
| Bieger_D_channel_depth | 0.899 | ft |
| Bieger_D_channel_cross_sectional_area | 13.8 | ft ² |

Bankfull Statistics Disclaimers [Pacific Border P Bieger 2015]

One or more of the parameters is outside the suggested range. Estimates were extrapolated with unknown errors.

Bankfull Statistics Flow Report [Pacific Border P Bieger 2015]

| Statistic | Value | Unit |
|---------------------------------------|-------|------|
| Bieger_P_channel_width | 9.38 | ft |
| Bieger_P_channel_cross_sectional_area | 11.7 | ft^2 |
| Bieger_P_channel_depth | 0.838 | ft |

Bankfull Statistics Flow Report [USA Bieger 2015]

| Statistic | Value | Unit |
|---|-------|------|
| Bieger_USA_channel_width | 10.9 | ft |
| Bieger_USA_channel_depth | 1.12 | ft |
| Bieger_USA_channel_cross_sectional_area | 14.1 | ft^2 |

Bankfull Statistics Flow Report [Area-Averaged]

| Statistic | Value | Unit |
|---|-------|------|
| Bieger_D_channel_width | 11.5 | ft |
| Bieger_D_channel_depth | 0.899 | ft |
| Bieger_D_channel_cross_sectional_area | 13.8 | ft^2 |
| Bieger_P_channel_width | 9.38 | ft |
| Bieger_P_channel_cross_sectional_area | 11.7 | ft^2 |
| Bieger_P_channel_depth | 0.838 | ft |
| Bieger_USA_channel_width | 10.9 | ft |
| Bieger_USA_channel_depth | 1.12 | ft |
| Bieger_USA_channel_cross_sectional_area | 14.1 | ft^2 |

Bankfull Statistics Citations

Bieger, Katrin; Rathjens, Hendrik; Allen, Peter M.; and Arnold, Jeffrey G., 2015, Development and Evaluation of Bankfull Hydraulic Geometry Relationships for the Physiographic Regions of the United States, Publications from USDA-ARS / UNL Faculty, 17p. (https://digitalcommons.unl.edu/usdaarsfacpub/1515?utm_source=digitalcommons.unl.edu%2Fusdaarsfacpub%2F1515&utm_medium=PDF&utm_campaign=PDFCoverPages)

➤ Maximum Probable Flood Statistics

Maximum Probable Flood Statistics Parameters [Crippen Bue Region 17]

| Parameter Code | Parameter Name | Value | Units | Min Limit | Max Limit |
|----------------|----------------|-------|--------------|-----------|-----------|
| DRNAREA | Drainage Area | 0.7 | square miles | 0.1 | 10000 |

Maximum Probable Flood Statistics Flow Report [Crippen Bue Region 17]

| Statistic | Value | Unit |
|------------------------------------|-------|--------|
| Maximum Flood Crippen Bue Regional | 4240 | ft^3/s |

Maximum Probable Flood Statistics Citations

Crippen, J.R. and Bue, Conrad D. 1977, Maximum Floodflows in the Conterminous United States, Geological Survey Water-Supply Paper 1887, 52p. (<https://pubs.usgs.gov/wsp/1887/report.pdf>)

USGS Data Disclaimer: Unless otherwise stated, all data, metadata and related materials are considered to satisfy the quality standards relative to the purpose for which the data were collected. Although these data and associated metadata have been reviewed for accuracy and completeness and approved for release by the U.S. Geological Survey (USGS), no warranty expressed or implied is made regarding the display or utility of the data for other purposes, nor on all computer systems, nor shall the act of distribution constitute any such warranty.

USGS Software Disclaimer: This software has been approved for release by the U.S. Geological Survey (USGS). Although the software has been subjected to rigorous review, the USGS reserves the right to update the software as needed pursuant to further analysis and review. No warranty, expressed or implied, is made by the USGS or the U.S. Government as to the functionality of the software and related material nor shall the fact of release constitute any such warranty. Furthermore, the software is released on condition that neither the USGS nor the U.S. Government shall be held liable for any damages resulting from its authorized or unauthorized use.

USGS Product Names Disclaimer: Any use of trade, firm, or product names is for descriptive purposes only and does not imply endorsement by the U.S. Government.

Application Version: 4.18.1

StreamStats Services Version: 1.2.22

NSS Services Version: 2.2.1

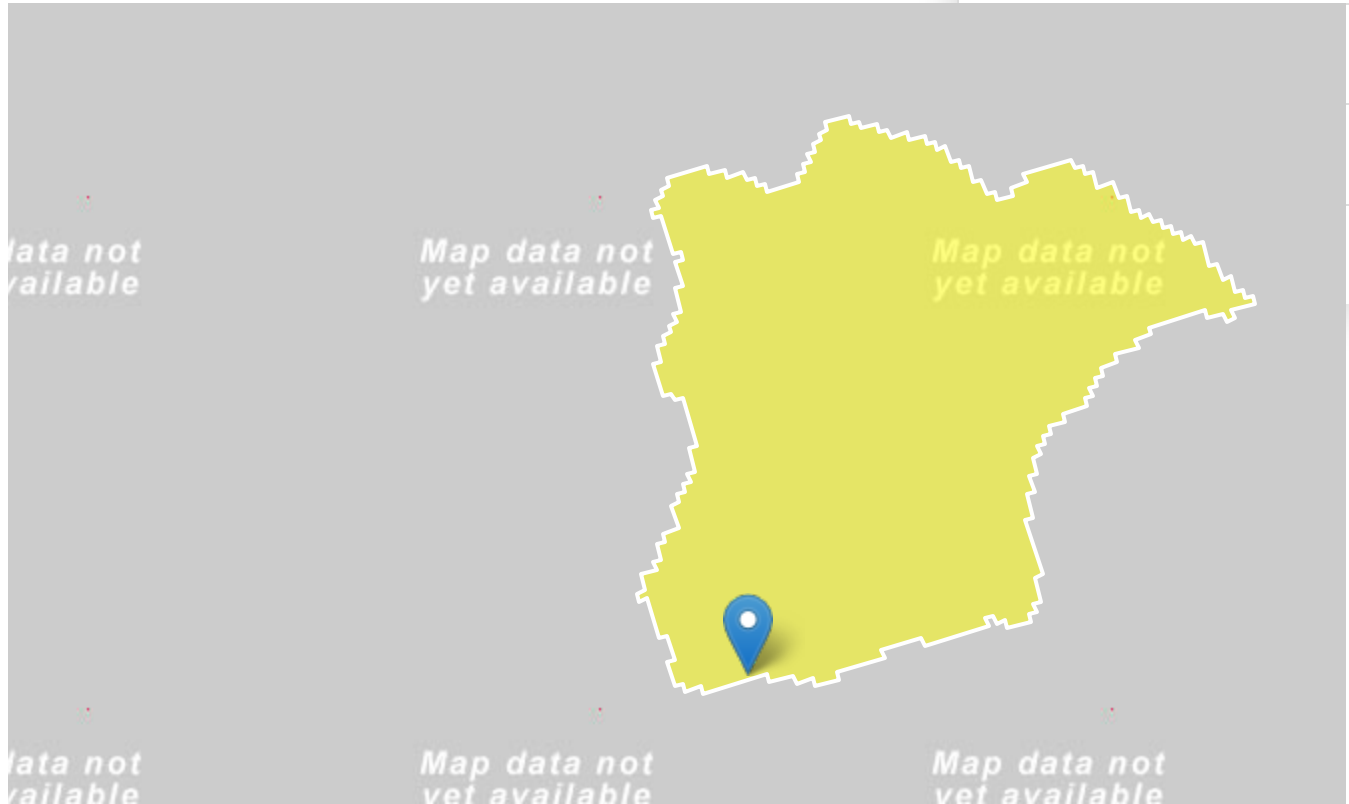
Cambell Creek StreamStats Report

Exploration Tools
Region ID: CA

Workspace ID: CA20221018193748788000

Clicked Point (Latitude, Longitude): 40.85904, -124.08178

Time: 2022-10-18 12:38:16 -0700



+ Collapse All

➤ Basin Characteristics

| Parameter Code | Parameter Description | Value | Unit |
|----------------|---|-------|--------------|
| DRNAREA | Area that drains to a point on a stream | 1.1 | square miles |
| PRECIP | Mean Annual Precipitation | 44.8 | inches |

➤ Peak-Flow Statistics

Peak-Flow Statistics Parameters [2012 5113 Region 1 North Coast]

| Parameter Code | Parameter Name | Value | Units | Min Limit | Max Limit |
|----------------|---------------------------|-------|--------------|-----------|-----------|
| DRNAREA | Drainage Area | 1.1 | square miles | 0.04 | 3200 |
| PRECIP | Mean Annual Precipitation | 44.8 | inches | 20 | 125 |

Peak-Flow Statistics Flow Report [2012 5113 Region 1 North Coast]

PII: Prediction Interval-Lower, Plu: Prediction Interval-Upper, ASEp: Average Standard Error of Prediction, SE: Standard Error (other -- see report)

| Statistic | Value | Unit | PII | Plu | ASEp |
|-----------------------|-------|--------------------|------|------|------|
| 50-percent AEP flood | 83.3 | ft ³ /s | 33.9 | 205 | 58.6 |
| 20-percent AEP flood | 166 | ft ³ /s | 78.8 | 350 | 47.4 |
| 10-percent AEP flood | 227 | ft ³ /s | 112 | 461 | 44.2 |
| 4-percent AEP flood | 308 | ft ³ /s | 156 | 607 | 42.7 |
| 2-percent AEP flood | 370 | ft ³ /s | 187 | 731 | 42.7 |
| 1-percent AEP flood | 436 | ft ³ /s | 215 | 883 | 44.3 |
| 0.5-percent AEP flood | 499 | ft ³ /s | 246 | 1010 | 44.4 |
| 0.2-percent AEP flood | 583 | ft ³ /s | 280 | 1210 | 46 |

Peak-Flow Statistics Citations

Gotvald, A.J., Barth, N.A., Veilleux, A.G., and Parrett, Charles, 2012, Methods for determining magnitude and frequency of floods in California, based on data through water year 2006: U.S. Geological Survey Scientific Investigations Report 2012-5113, 38 p., 1 pl. (<http://pubs.usgs.gov/sir/2012/5113/>)

USGS Data Disclaimer: Unless otherwise stated, all data, metadata and related materials are considered to satisfy the quality standards relative to the purpose for which the data were collected. Although these data and associated metadata have been reviewed for accuracy and completeness and approved for release by the U.S. Geological Survey (USGS), no warranty expressed or implied is made regarding the display or utility of the data for other purposes, nor on all computer systems, nor shall the act of distribution constitute any such warranty.

USGS Software Disclaimer: This software has been approved for release by the U.S. Geological Survey (USGS). Although the software has been subjected to rigorous review, the USGS reserves the right to update the software as needed pursuant to further analysis and review. No warranty, expressed or implied, is made by the USGS or the U.S. Government as to the functionality of the software and related material nor shall the fact of release constitute any such warranty. Furthermore, the software is released on condition that neither the USGS nor the U.S. Government shall be held liable for any damages resulting from its authorized or unauthorized use.

USGS Product Names Disclaimer: Any use of trade, firm, or product names is for descriptive purposes only and does not imply endorsement by the U.S. Government.

Application Version: 4.10.1

StreamStats Services Version: 1.2.22

NSS Services Version: 2.2.1